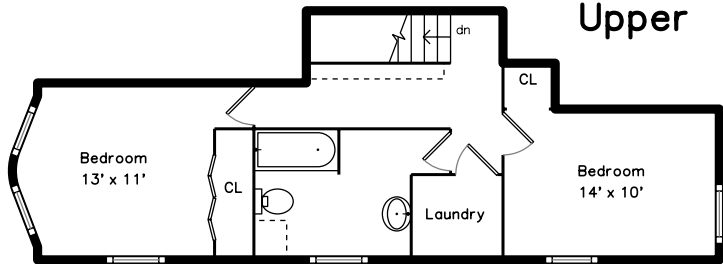
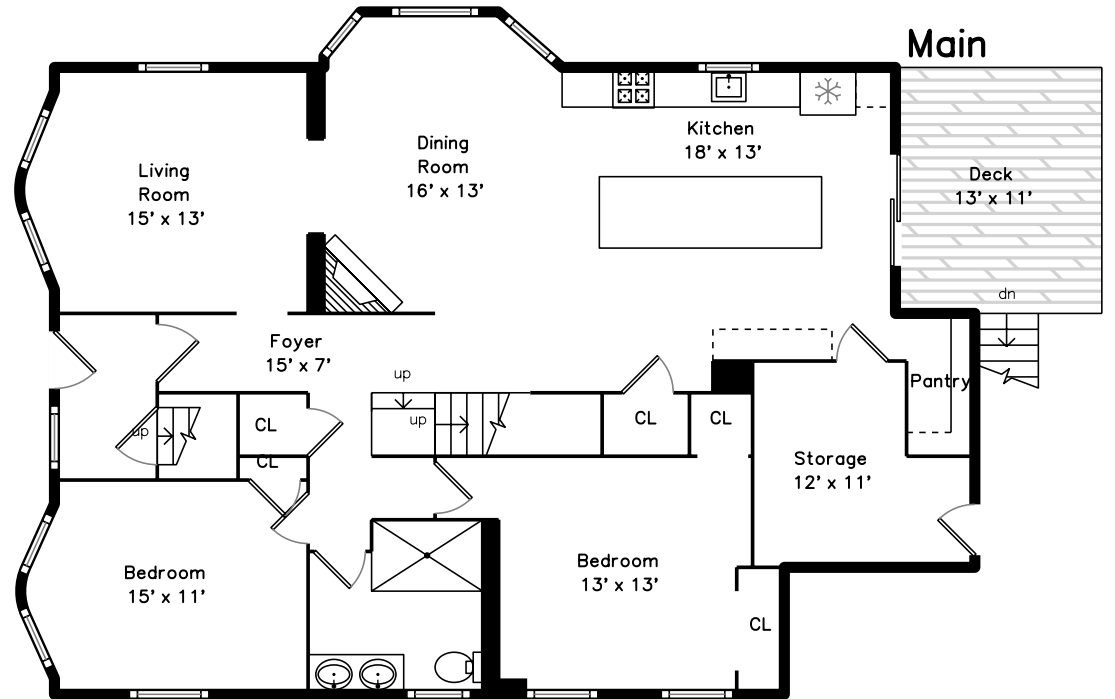


### Upper



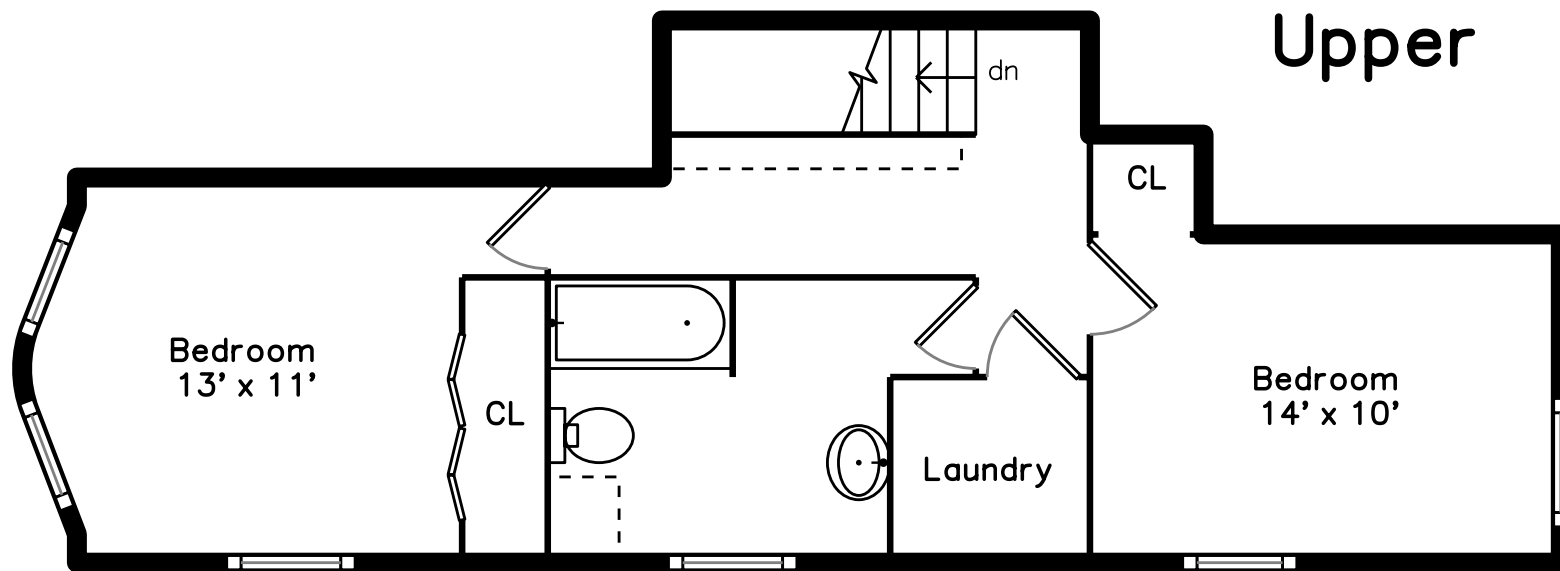
### Main



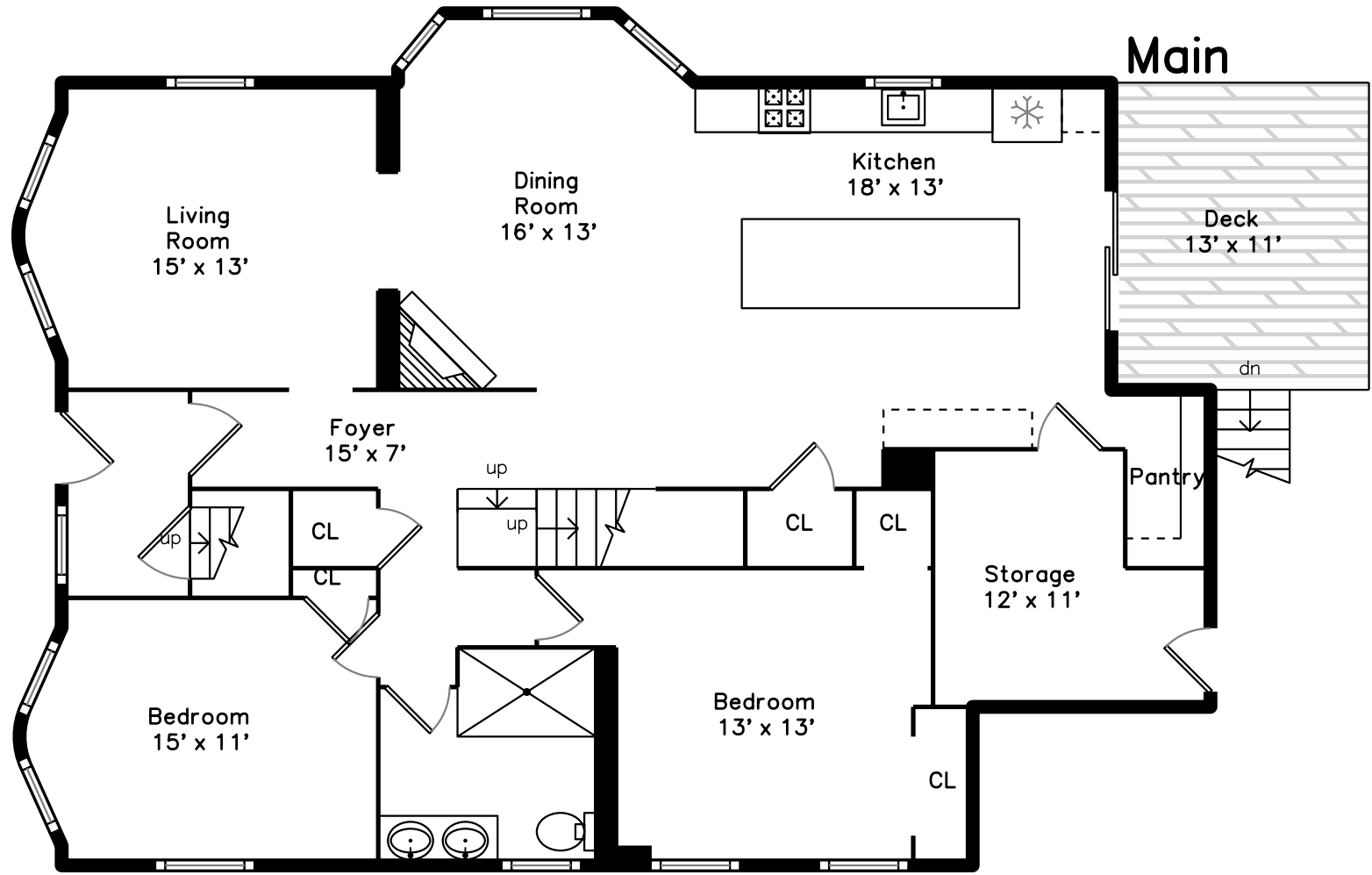
## 60 Roslin Street #1 Boston, MA 02124

PicturePlan(tm) by Vis-Home(C) 2020

Measurements may not be 100% accurate.  
Floor plans are provided for convenience only.  
Room sizes are not used to calculate area.



Upper



Main

Living Room  
15' x 13'

Dining Room  
16' x 13'

Kitchen  
18' x 13'

Deck  
13' x 11'

Foyer  
15' x 7'

Pantry

Storage  
12' x 11'

Bedroom  
15' x 11'

Bedroom  
13' x 13'

CL

CL

CL

CL

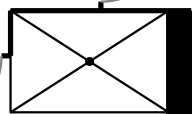
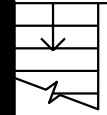
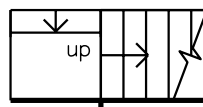
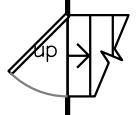
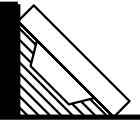
CL

dn

up

up

up





Outside



Backyard



Living Room



Living Room



Dining Room



Dining Room



Dining Room



Kitchen



Kitchen



Kitchen



Kitchen



Kitchen



Bedroom



Bedroom



Bedroom





Bedroom



Bathroom



Bathroom



Deck



Hall



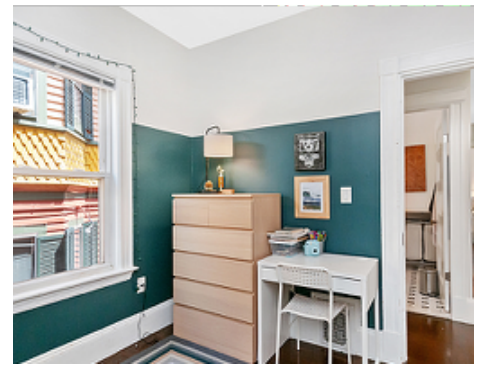
Bedroom



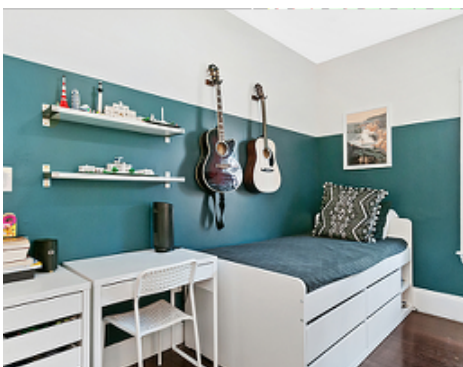
Bedroom



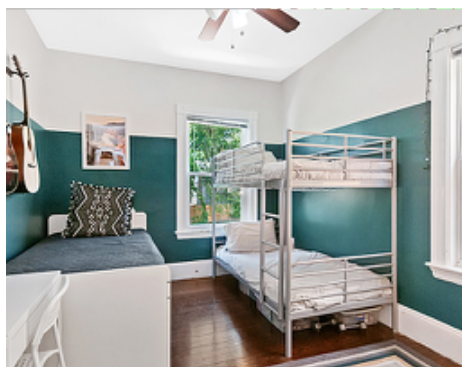
Bedroom



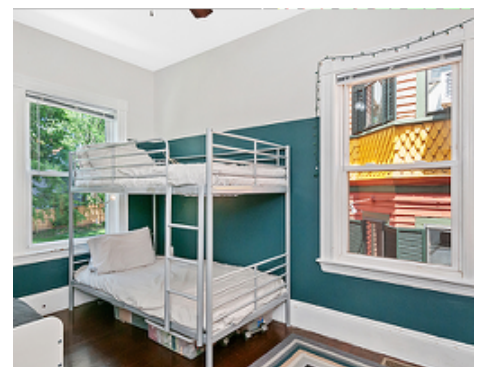
Bedroom



Bedroom



Bedroom



Bedroom



Bathroom



Bathroom