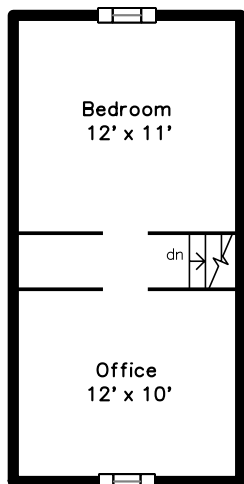
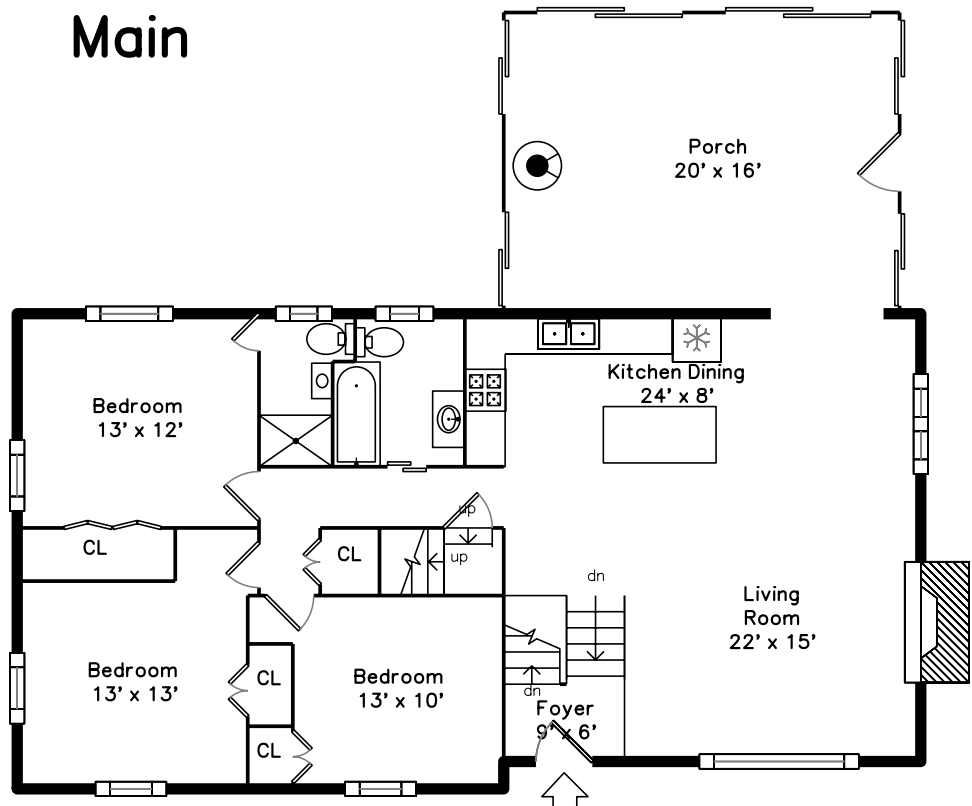


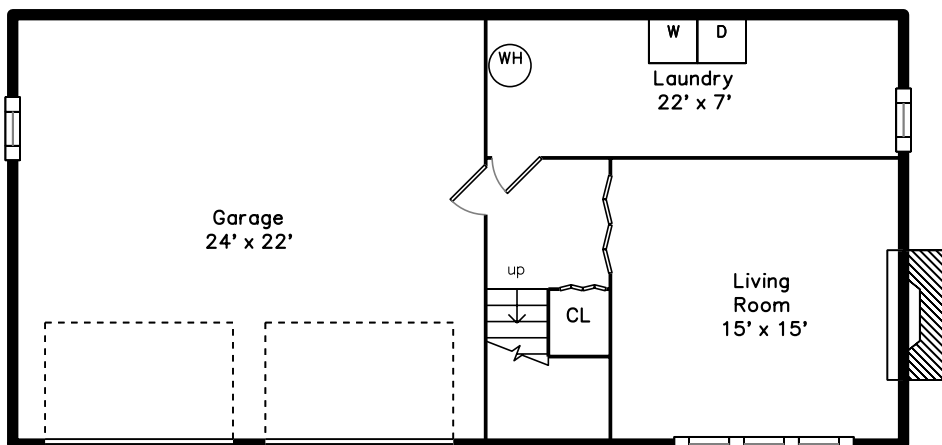
## Upper



## Main



## Lower

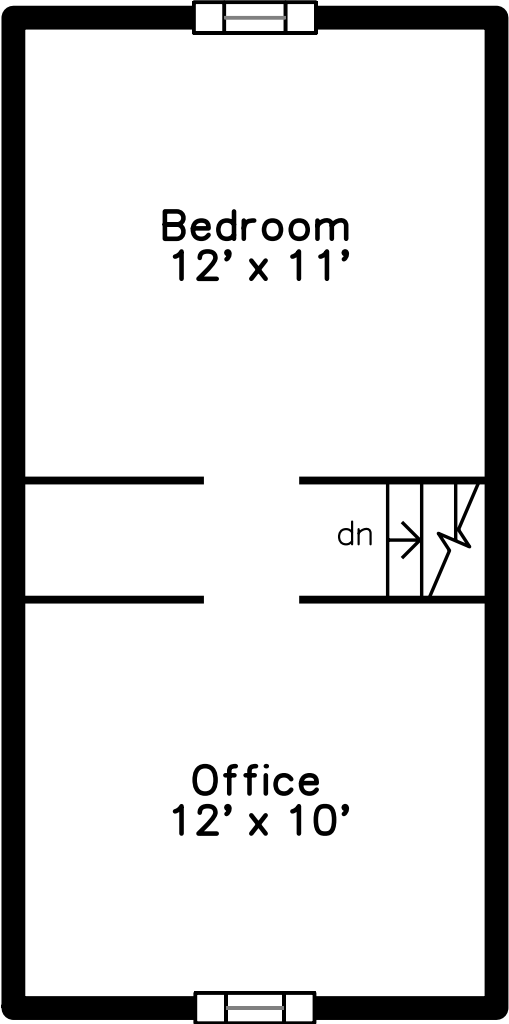


139 Hobart Street  
Hingham, MA 02043

PicturePlan by vis-home

Measurements may not be 100% accurate.  
Floor plans are provided for convenience only.  
Room sizes are not used to calculate area.

# Upper



# Main

This is a detailed floor plan for the main level of a house. The layout includes a large front porch (20' x 16') with a circular feature, possibly a well or a decorative element. The main living area consists of a living room (22' x 15') with a fireplace on the right wall, a kitchen/dining area (24' x 8') with a refrigerator, stove, and sink, and a central foyer (9' x 6') with a staircase leading up and down. There are three bedrooms: one (13' x 12') with a closet, one (13' x 13') with a closet, and one (13' x 10') with a closet. A bathroom is located between the bedrooms and the kitchen/dining area. The plan also shows various closets (CL), a linen closet (LN), and a storage area (ST). The overall design is functional and spacious.

Porch  
20' x 16'

Bedroom  
13' x 12'

CL

Bedroom  
13' x 13'

CL

CL

Bedroom  
13' x 10'

CL

CL

CL

Kitchen Dining  
24' x 8'

Living Room  
22' x 15'

Foyer  
9' x 6'

up  
dn

up  
dn

CL

Bedroom  
13' x 10'

Kitchen Dining  
24' x 8'

Living Room  
22' x 15'

Foyer  
9' x 6'

dn

CL

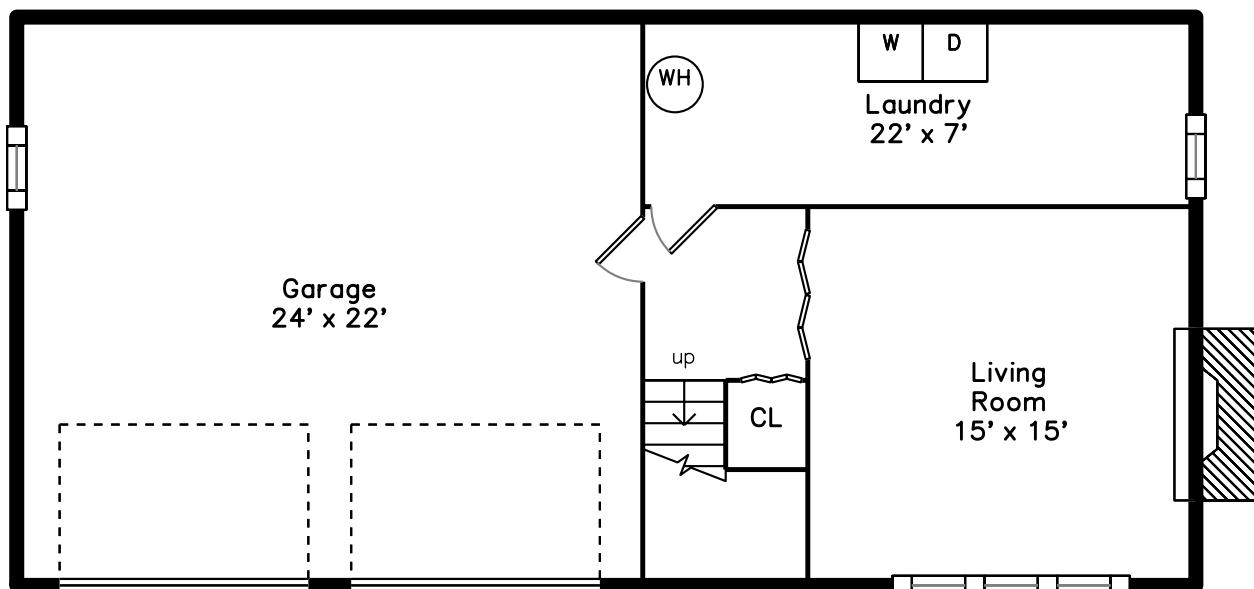
1

CL

~~ap~~

---

# Lower





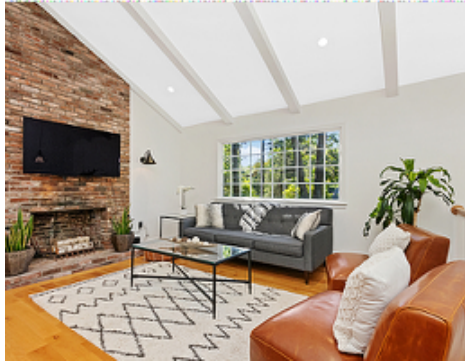
Outside



Outside



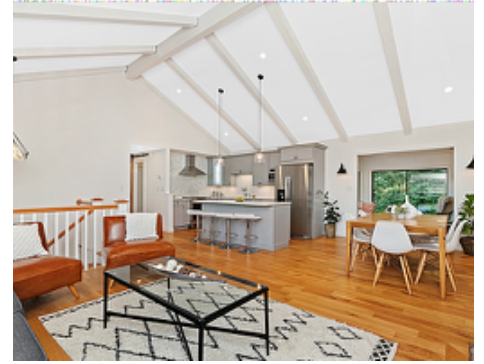
Outside



Living Room



Living Room



Living Room



Living Room



Kitchen Dining



Kitchen Dining



Kitchen Dining



Kitchen Dining



Kitchen Dining



Kitchen Dining



Bedroom



Bedroom





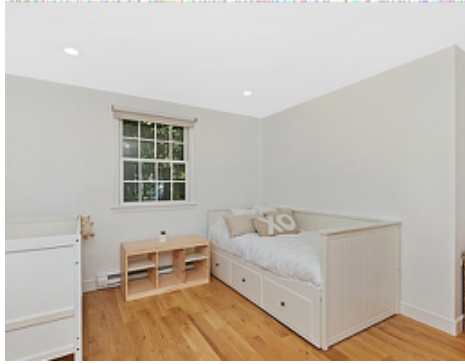
Bedroom



Bedroom



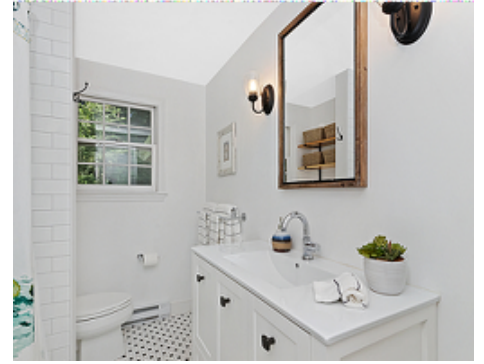
Bedroom



Bedroom



Bathroom



Bathroom



Porch



Porch



Porch



Porch



Bedroom



Bedroom



Office



Office



Living Room





Living Room



Laundry



Back



Back



Back



Back