

Storage  
33' x 21'

The floor plan for the second floor includes the following rooms and features:

- Bedroom - 3**: 12' x 11', located at the top left, with a closet (CL) and a door leading to a bathroom.
- Bedroom - 4**: 14' x 13', located at the top right, with a closet (CL) and a door leading to a bathroom.
- Bedroom - 2**: 14' x 14', located on the right side, with a closet (CL) and a door leading to a bathroom.
- Main Bedroom**: 22' x 14', located at the bottom right, with a closet (CL) and a door leading to a bathroom.
- Laundry**: 10' x 7', located on the left side, with a door (D) leading to a bathroom.
- WIC**: 10' x 7', located at the bottom left, with a door leading to a bathroom.
- Bathroom**: Located in the center, accessible from multiple bedrooms and the main bedroom, featuring a bathtub, toilet, and sink.

Dining Room  
13' x 12'

Kitchen  
28' x 13'

Foyer  
13' x 9'

Living Room  
13' x 12'

Family Room  
18' x 17'

Balcony  
18' x 14'

Garage  
27' x 22'

up

down

CL

CL

up

down

Workshop/Storage  
26' x 12'

up

CL

Kitchen  
12' x 12'

Living Room  
14' x 7'

Mud Room  
7' x 5'

Media Room  
16' x 12'

Bedroom - 5  
12' x 11'

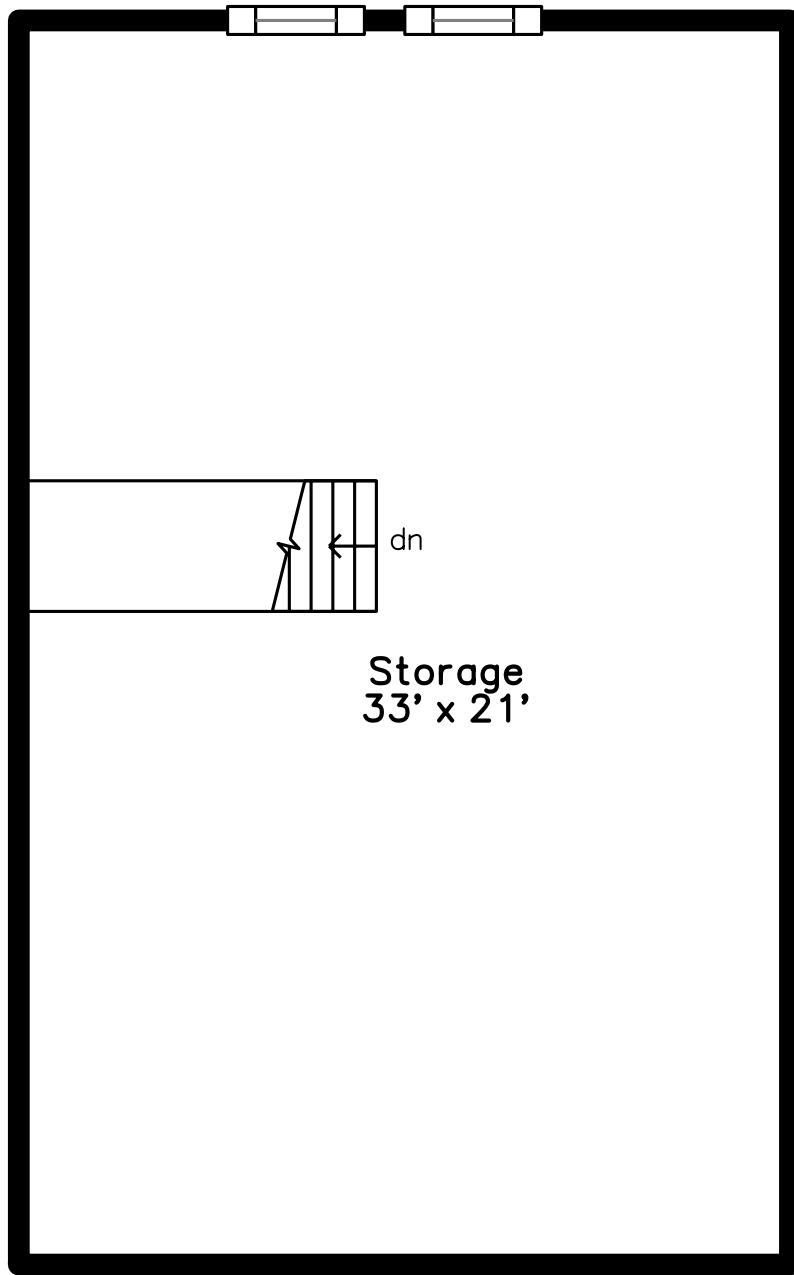
Bedroom - 6  
11' x 9'

Utility  
4' x 3'

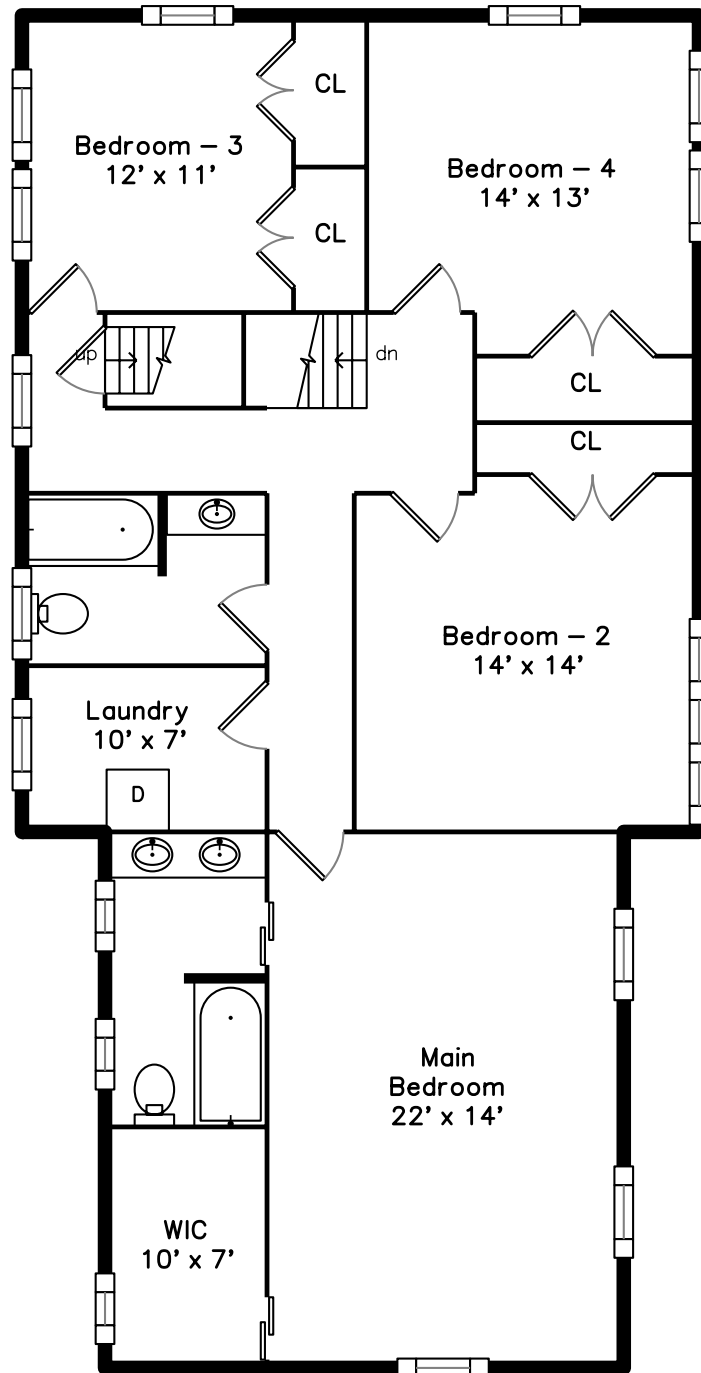
CL

Measurements may not be 100% accurate.  
Floor plans are provided for convenience only.  
Room sizes are not used to calculate area.

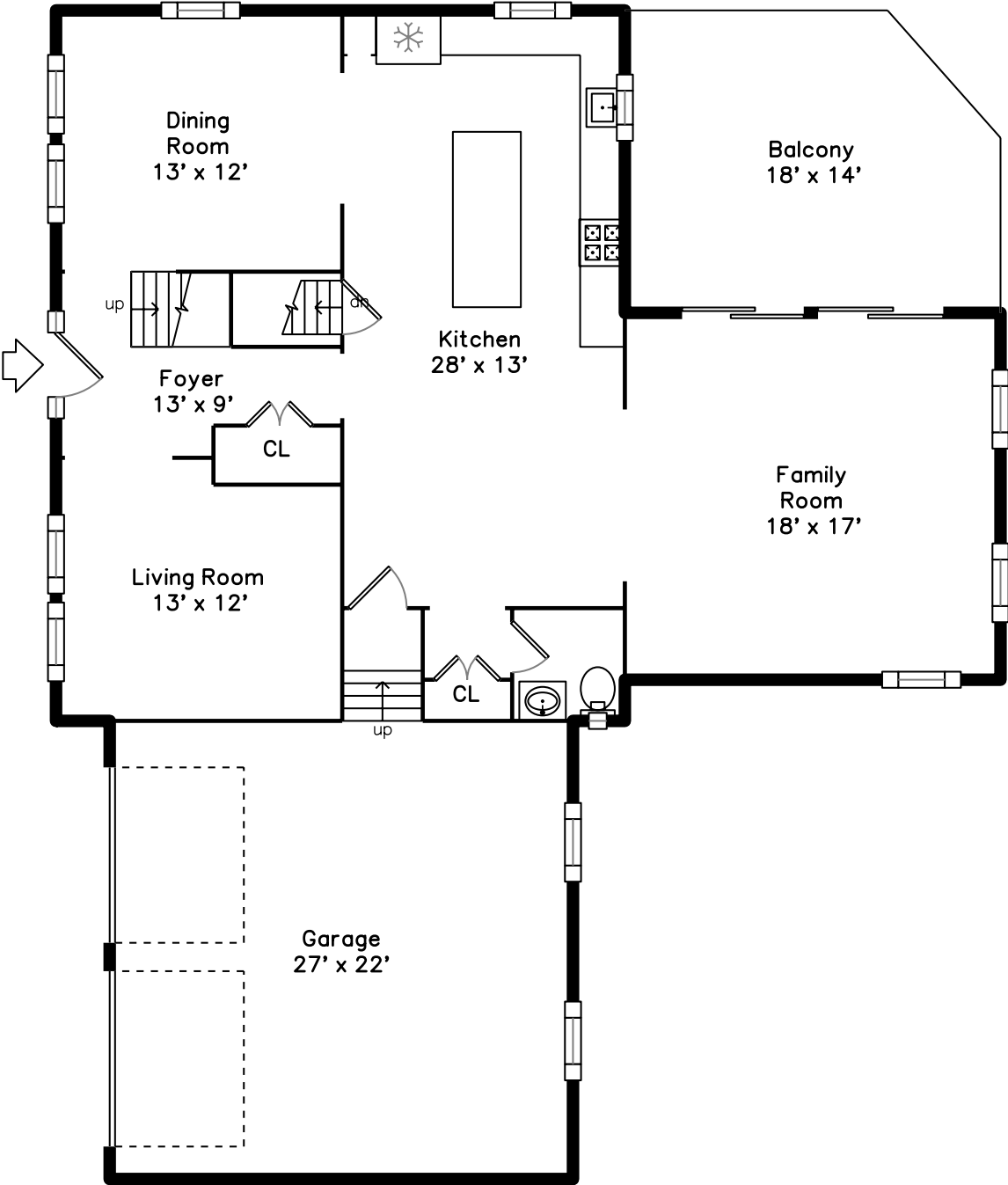
# Top



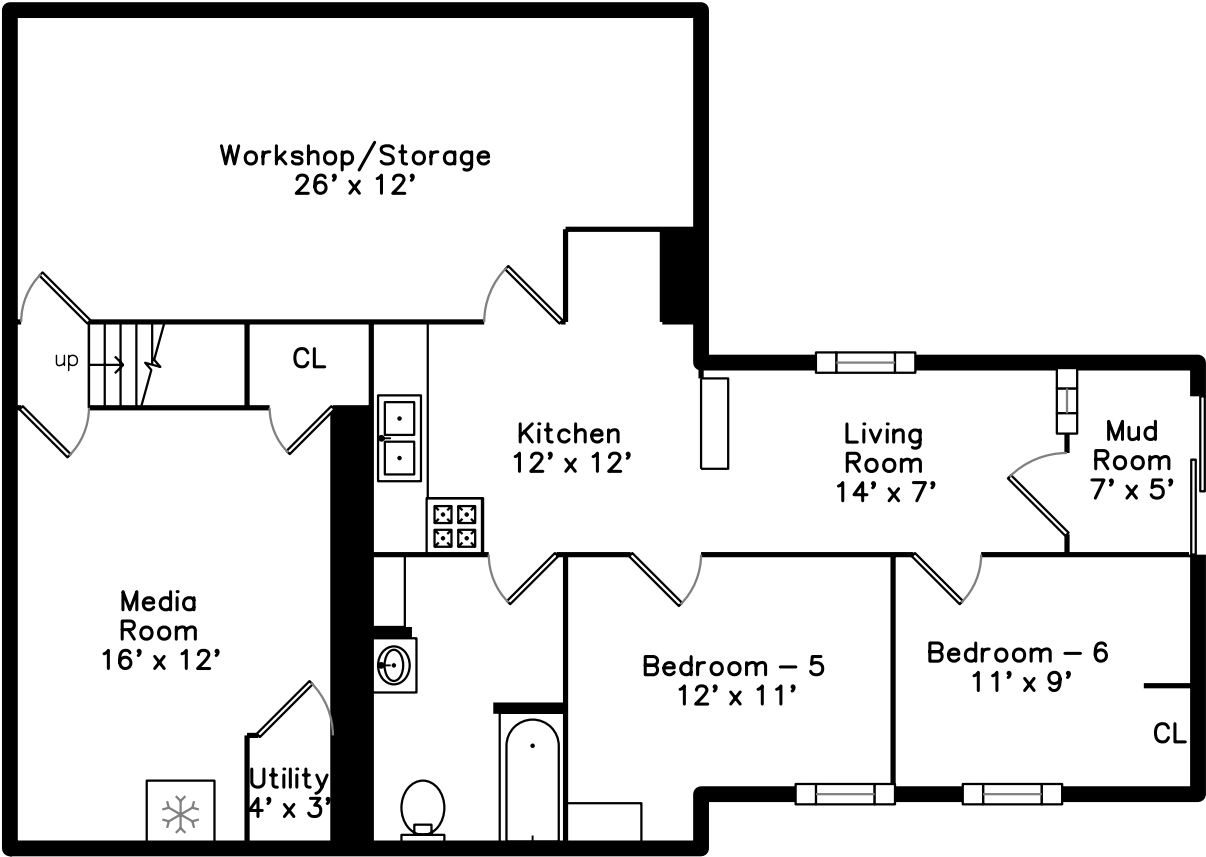
# Upper



Main



# Basement





Outside



Outside



Back



Back



Foyer



Dining Room



Dining Room



Kitchen



Kitchen



Kitchen



Kitchen



Kitchen



Kitchen



Family Room



Family Room





Office



Office



Bathroom



Balcony



Balcony



Master Bedroom



Master Bedroom



Master Bedroom



Bedroom



Bedroom



Bedroom



Bedroom



Bedroom



Bedroom



Master Bathroom





Master Bathroom



Bathroom



Laundry



Bonus Room



Living Room



Living Room



Kitchen



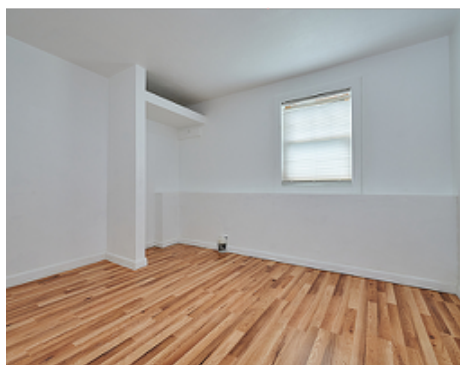
Kitchen



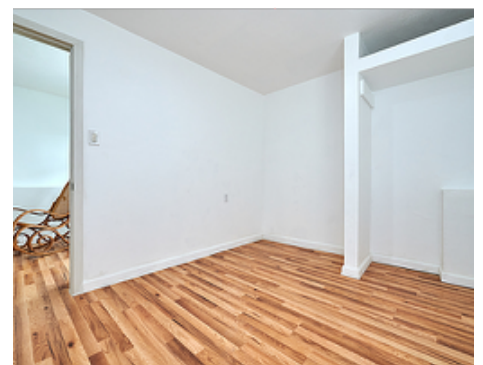
Bonus Room



Bonus Room



Bedroom



Bedroom



Bathroom



Bathroom