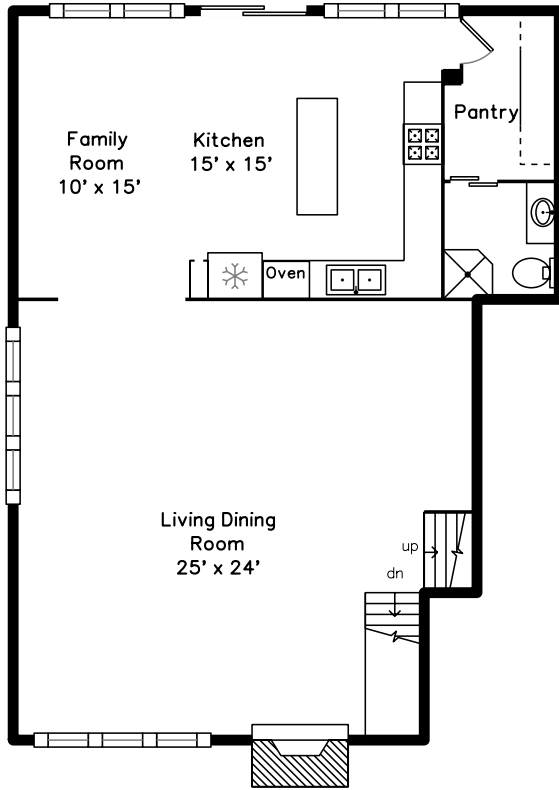
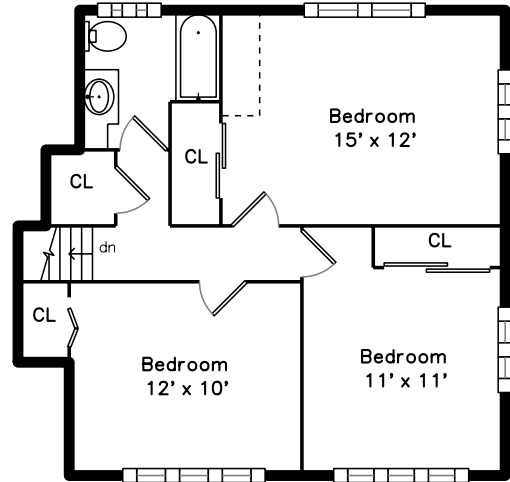


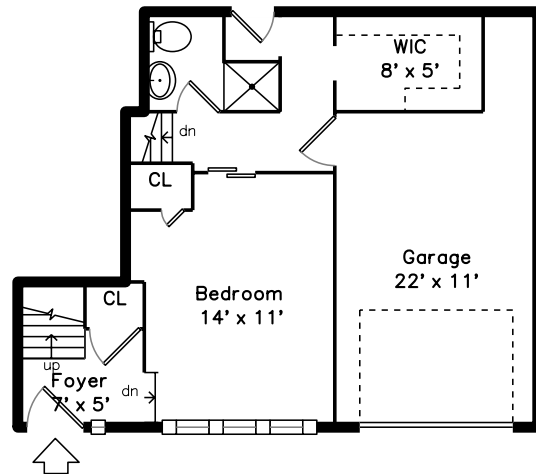
Main



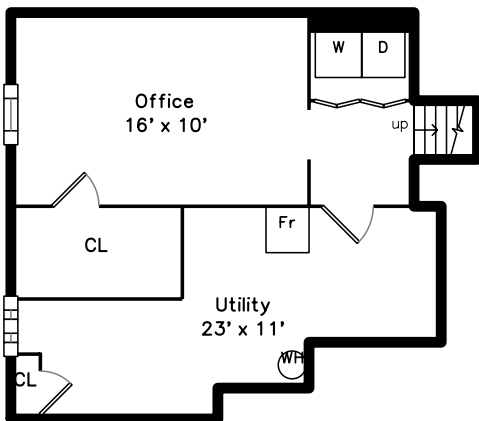
Upper



Lower



Basement

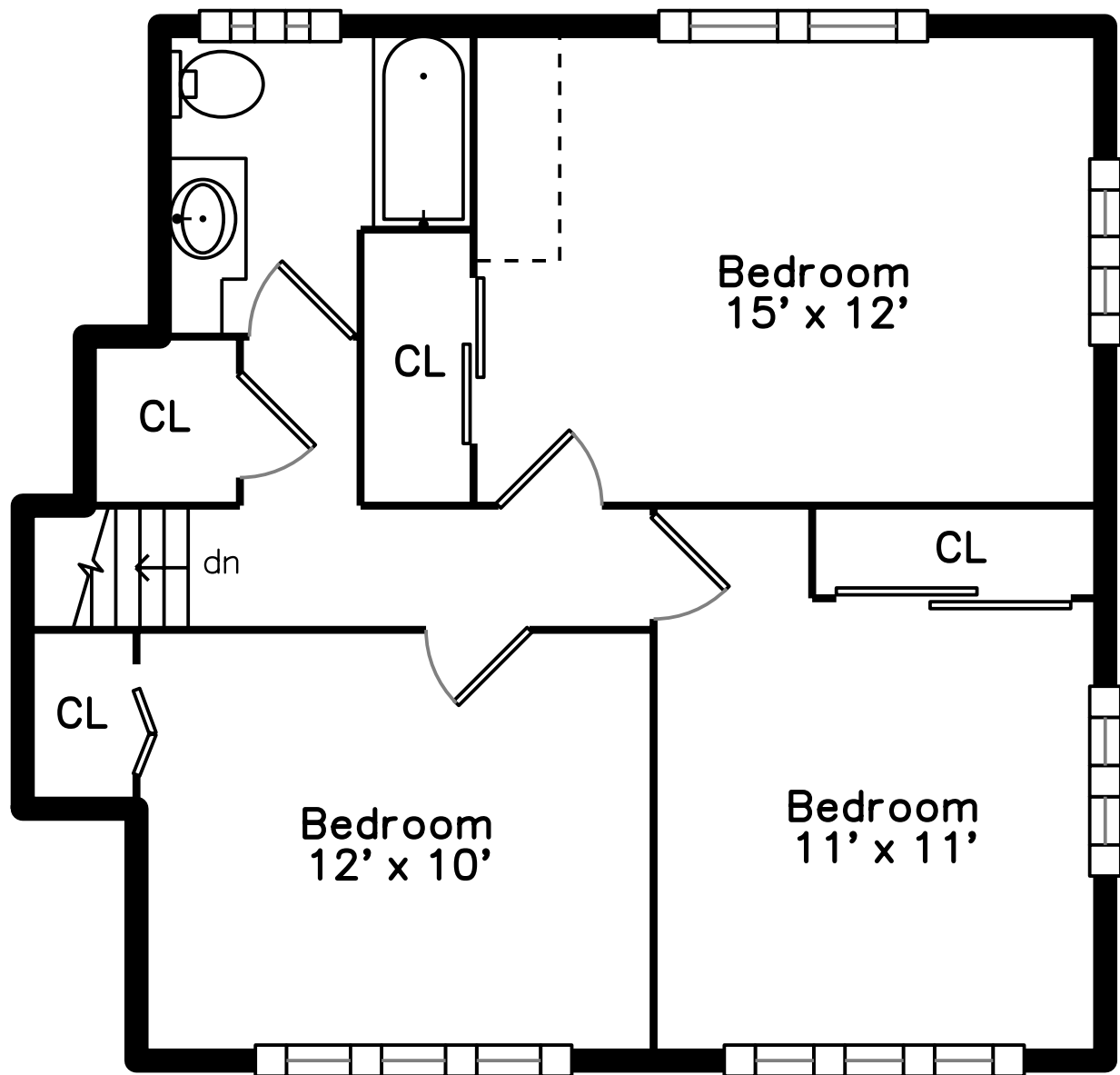


11 Mildred Road
Newton, MA 02459

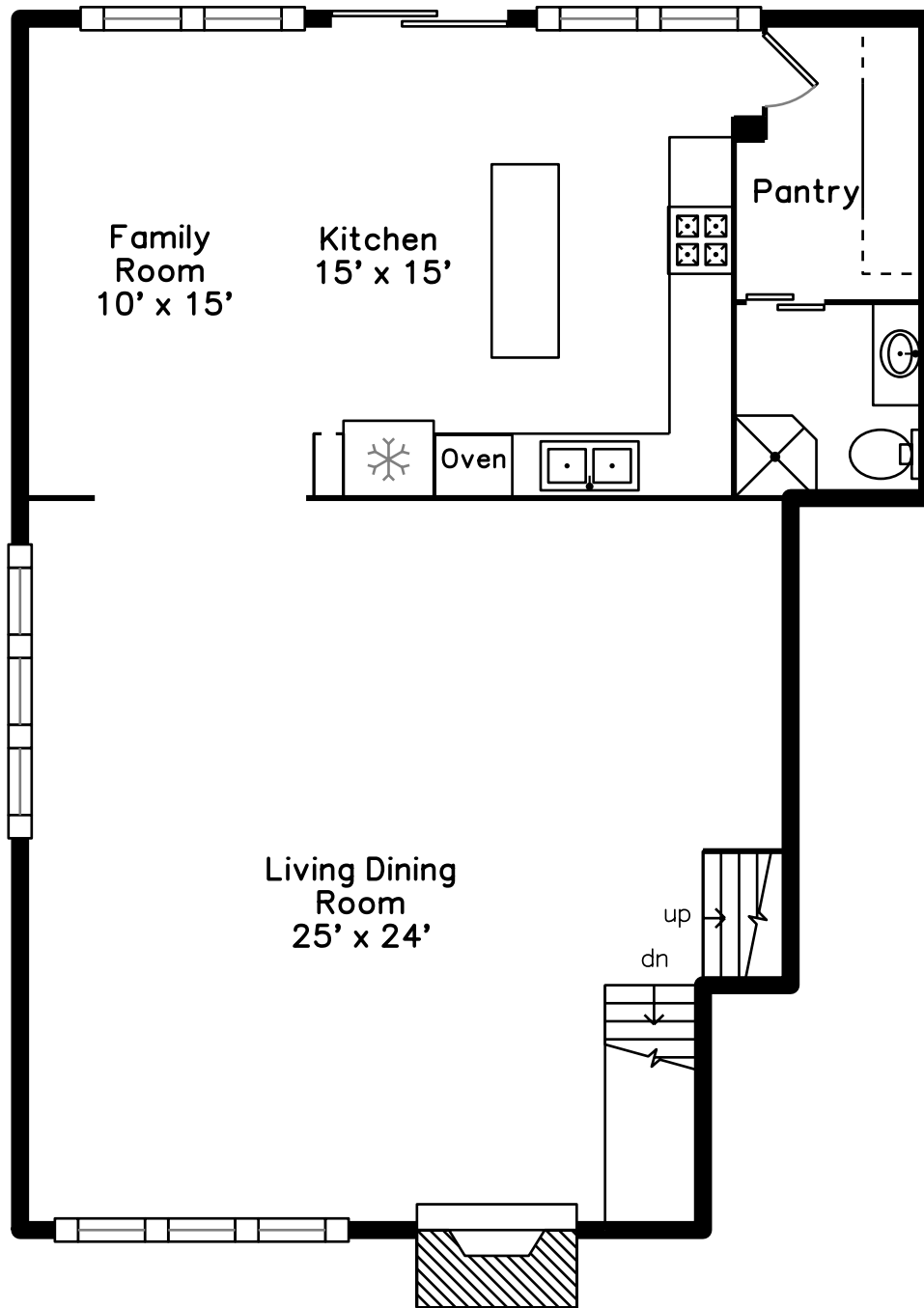
PicturePlan by  vis-home

Measurements may not be 100% accurate.
Floor plans are provided for convenience only.
Room sizes are not used to calculate area.

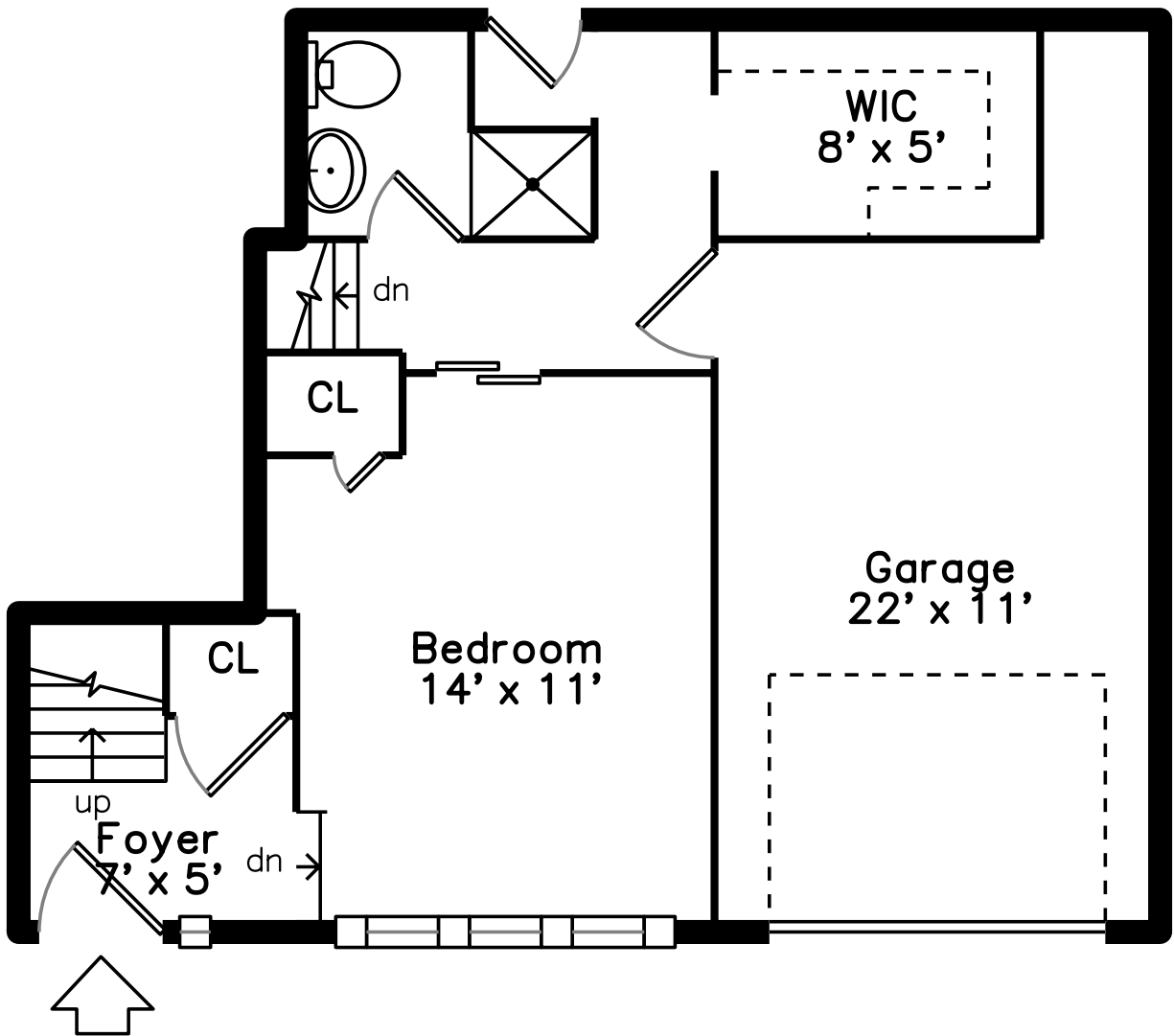
Upper



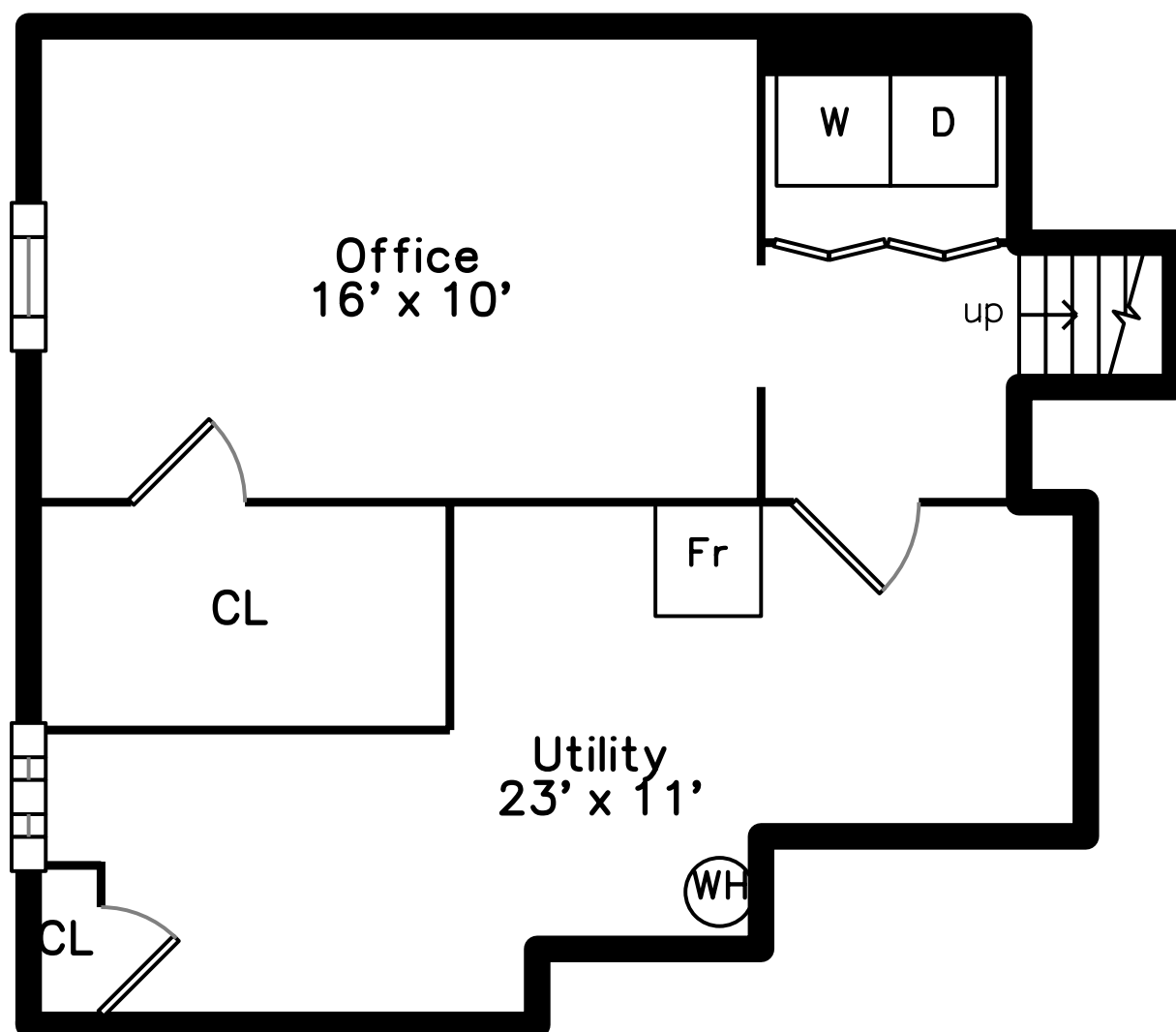
Main



Lower



Basement





Deck



Deck



Deck



Deck



Deck



Deck



Deck



Deck



Deck



Deck



Deck



Deck



Deck



Deck



Living Dining Room



Living Dining Room



Living Dining Room



Living Dining Room



Living Dining Room



Living Dining Room



Living Dining Room



Living Dining Room



Living Dining Room



Living Dining Room



Kitchen



Kitchen



Kitchen



Kitchen



Kitchen



Kitchen



Kitchen



Kitchen



Family Room



Family Room



Pantry



Pantry



Bathroom



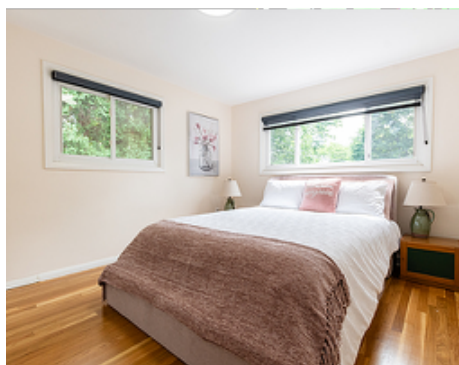
Bedroom



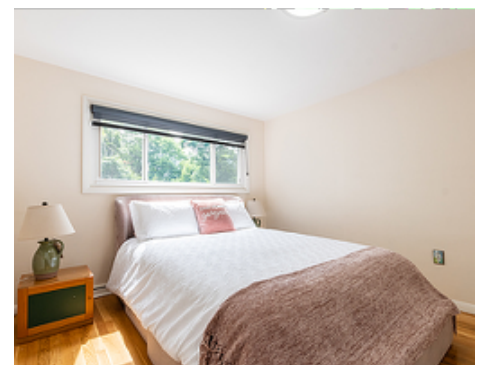
Bedroom



Bedroom



Bedroom



Bedroom



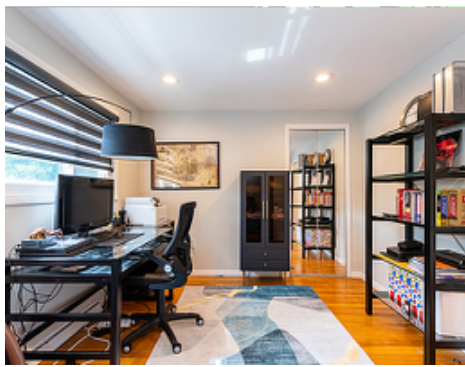
Bedroom



Bedroom



Bedroom



Bedroom



Bathroom



Bathroom



Bathroom



Bedroom



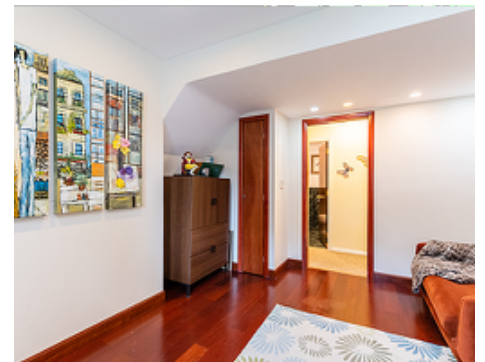
Bedroom



Bedroom



Bedroom



Bedroom



Bathroom



Bathroom



Hall



WalkInCloset



Office



Office



Office



Office



Laundry