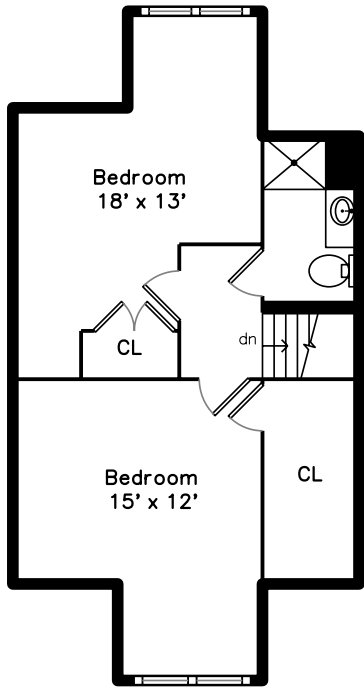
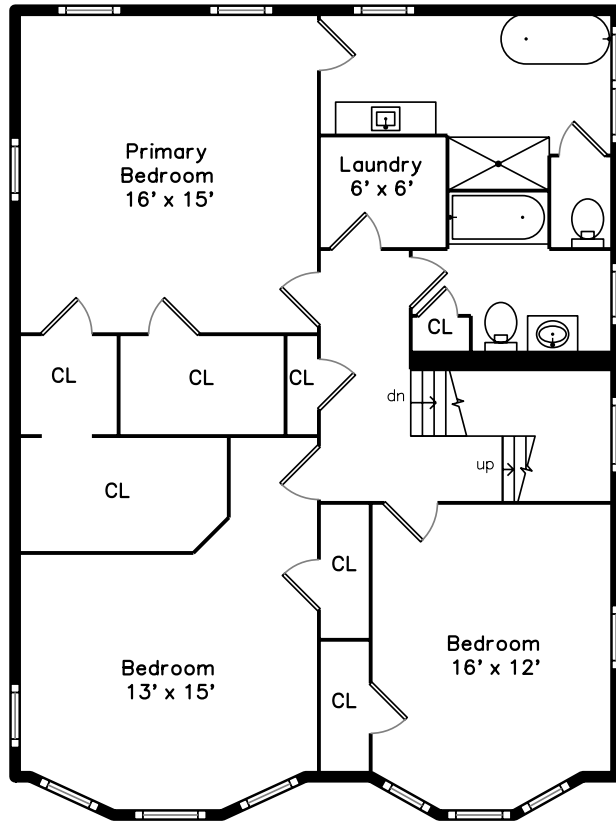


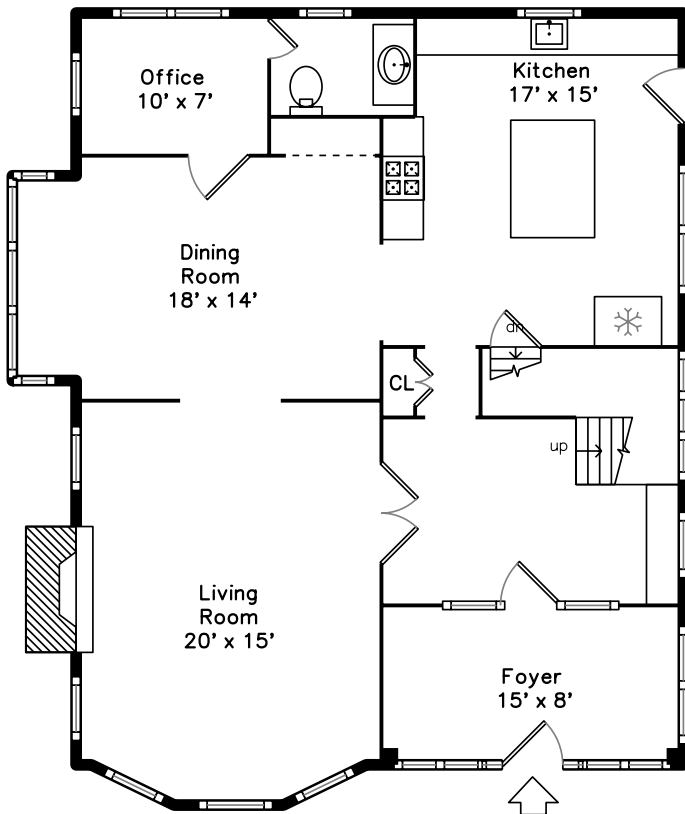
Top




Upper



Main

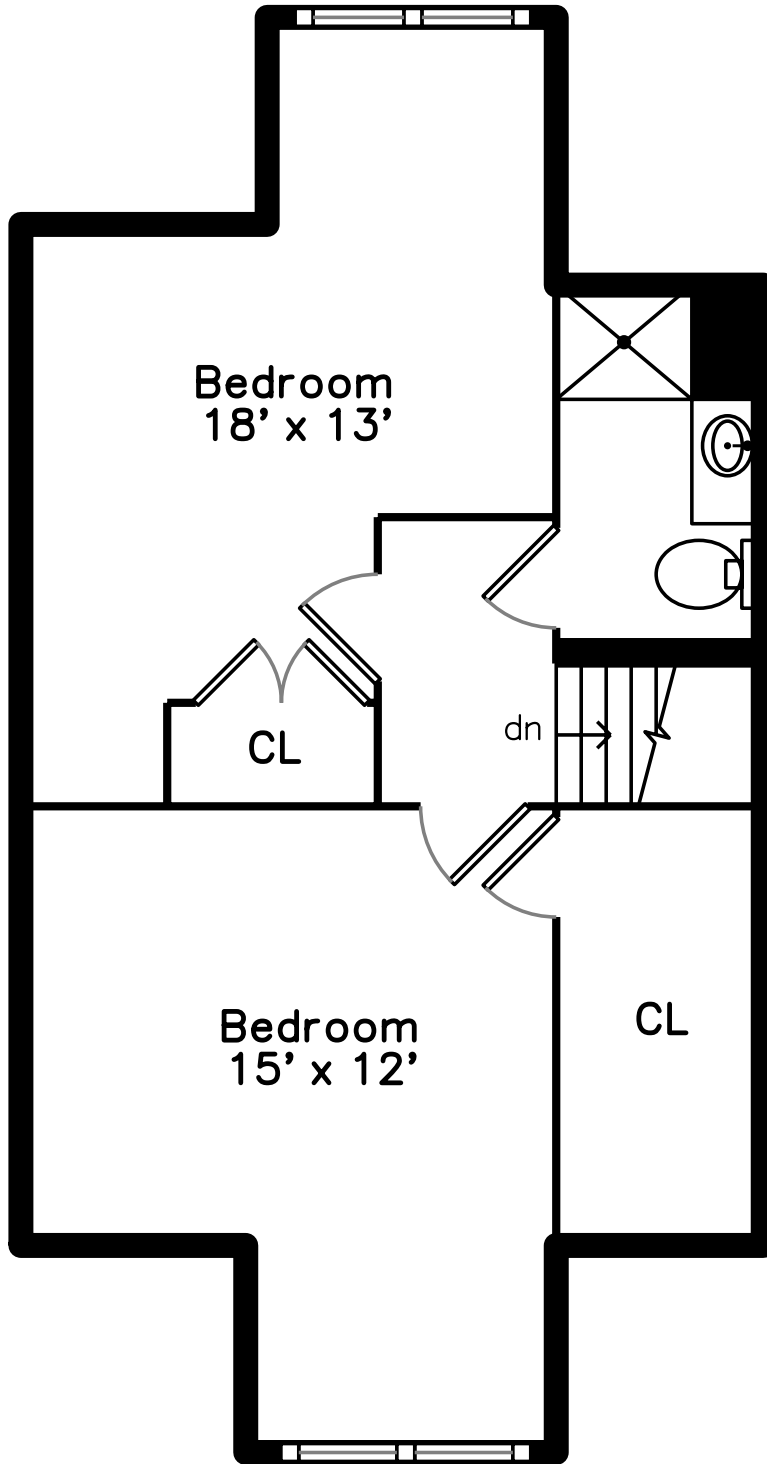


61 Park Street
West Roxbury, MA 02132

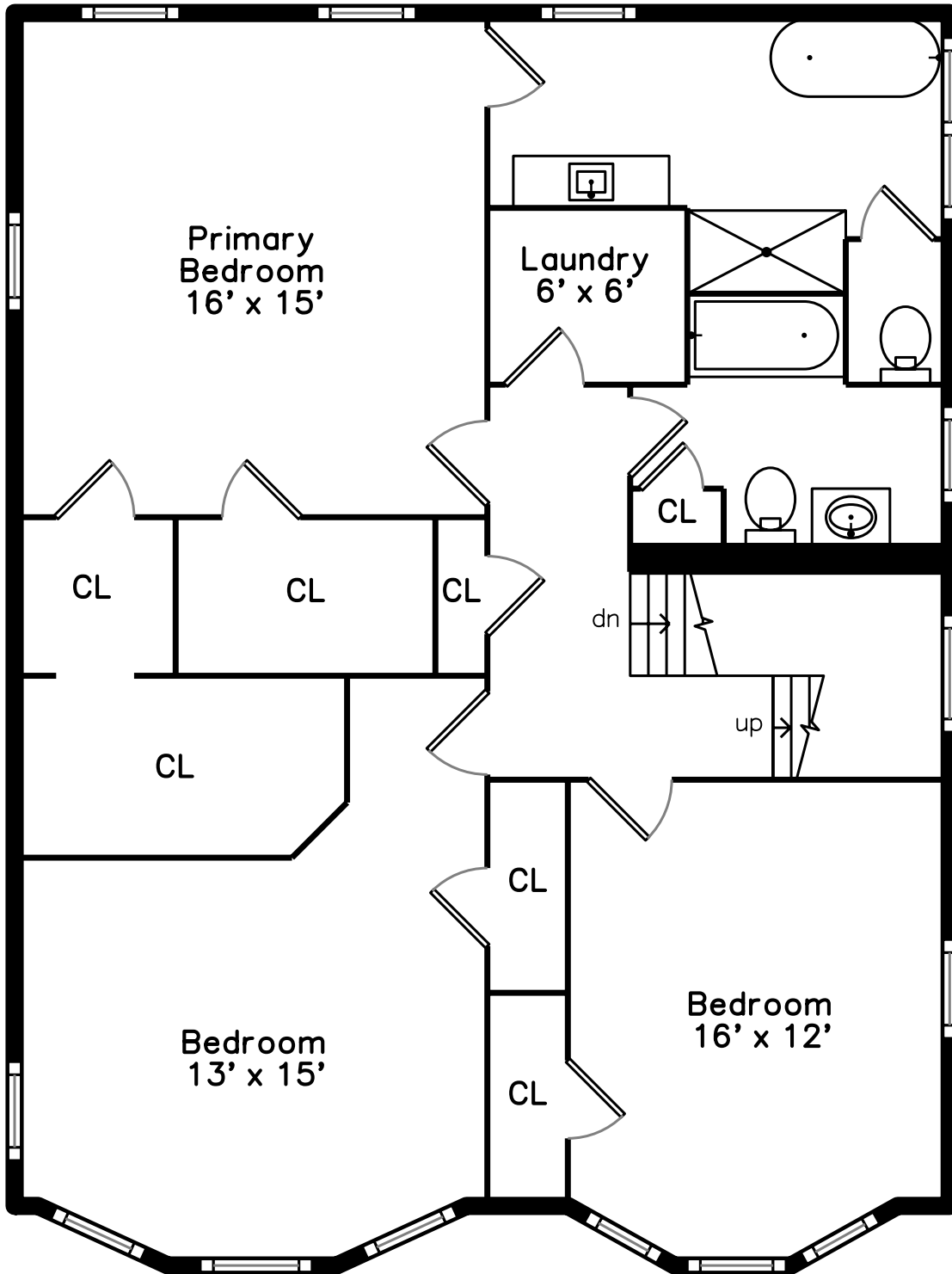
PicturePlan by  vis-home

Measurements may not be 100% accurate.
Floor plans are provided for convenience only.
Room sizes are not used to calculate area.

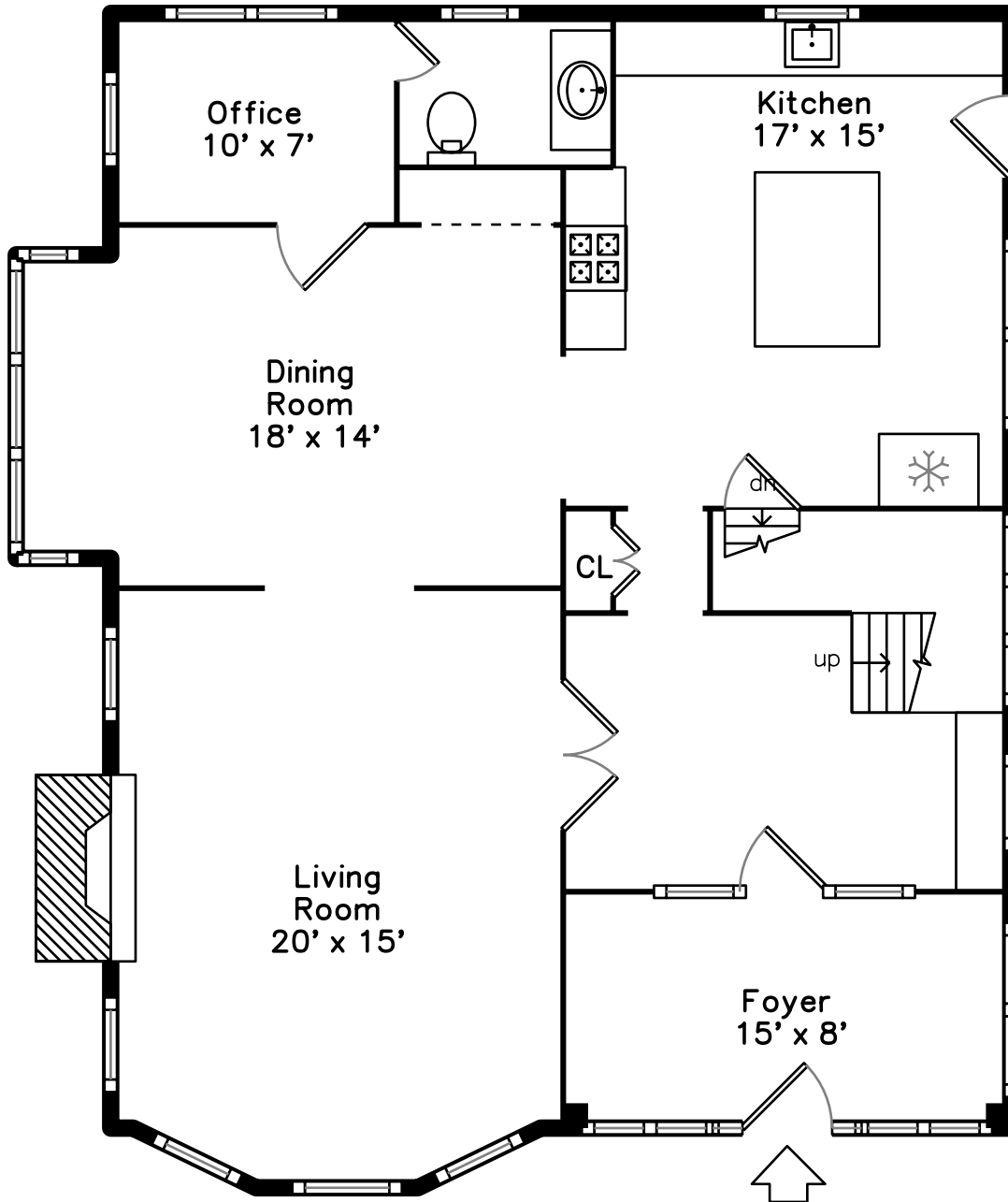
Top



Upper



Main





Outside



Outside



Outside



Backyard



Backyard



Backyard



Backyard



Backyard



Backyard



Foyer



Foyer



Foyer



Foyer



Hall



Hall



Hall



Hall



Living Room



Living Room



Living Room



Living Room



Dining Room



Dining Room



Dining Room



Dining Room



Kitchen



Kitchen



Kitchen



Kitchen



Kitchen



Kitchen



Kitchen



Office



Office



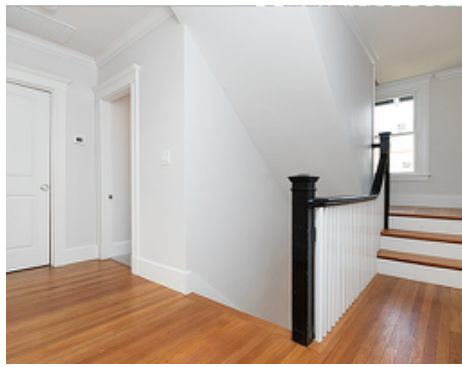
Office



Office



Bathroom



Hall



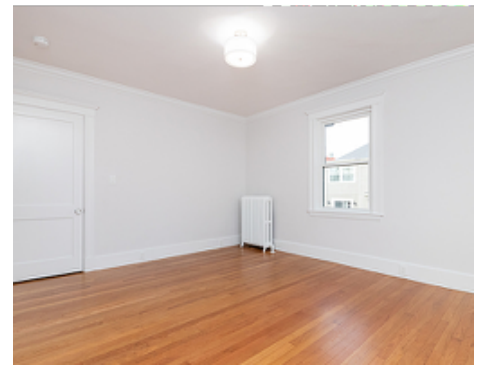
Bedroom



Bedroom



Bedroom



Bedroom



Bedroom



Bedroom



Bedroom



Bedroom



Primary Bedroom



Primary Bedroom



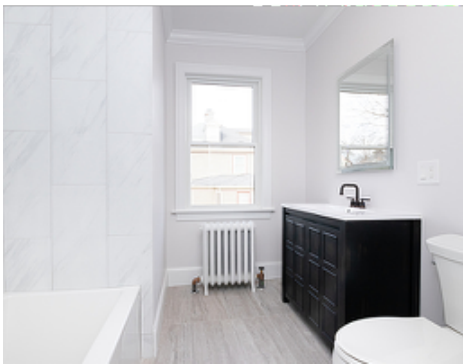
Primary Bedroom



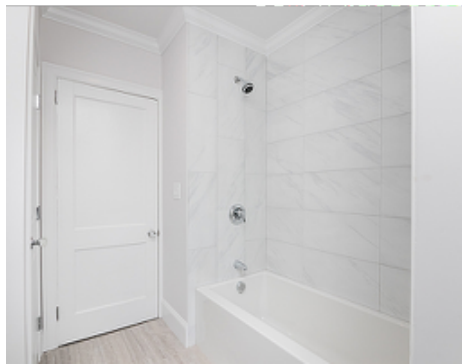
Primary Bedroom



Primary Bedroom



Bathroom



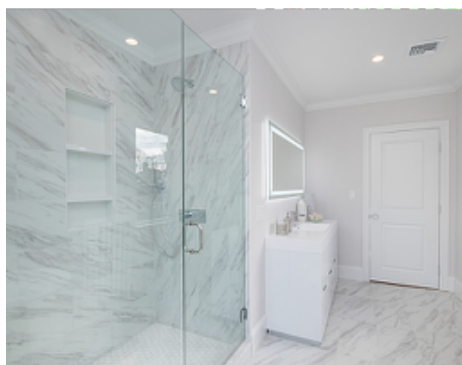
Bathroom



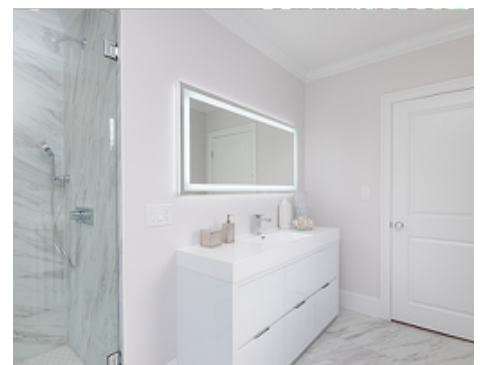
Primary Bathroom



Primary Bathroom



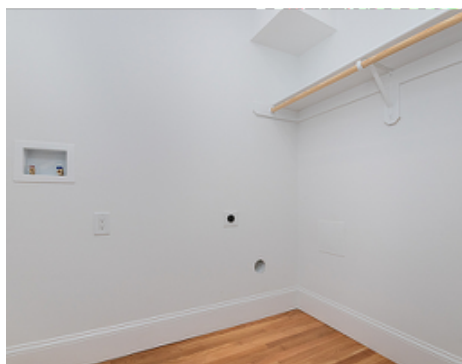
Primary Bathroom



Primary Bathroom



Closet



Laundry



Bedroom



Bedroom



Bedroom



Bedroom



Bedroom



Bedroom



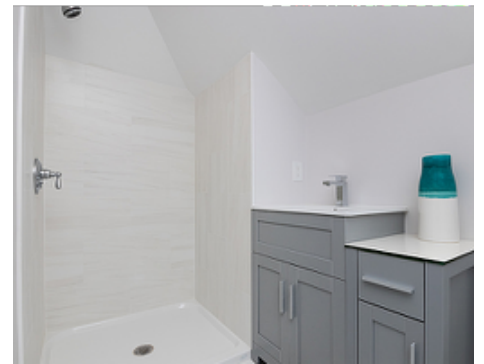
Bedroom



Bedroom



Bedroom



Bathroom