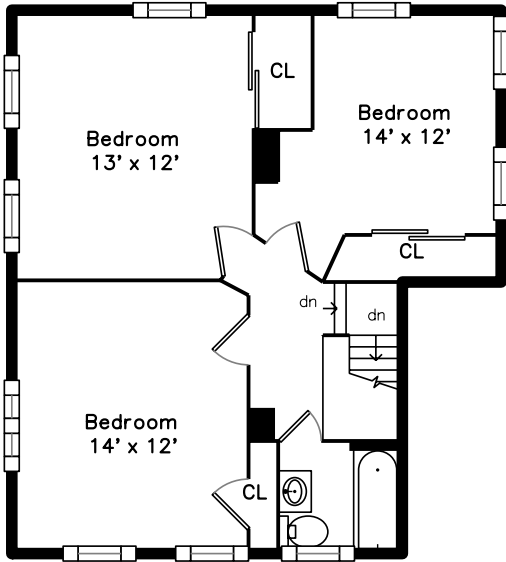
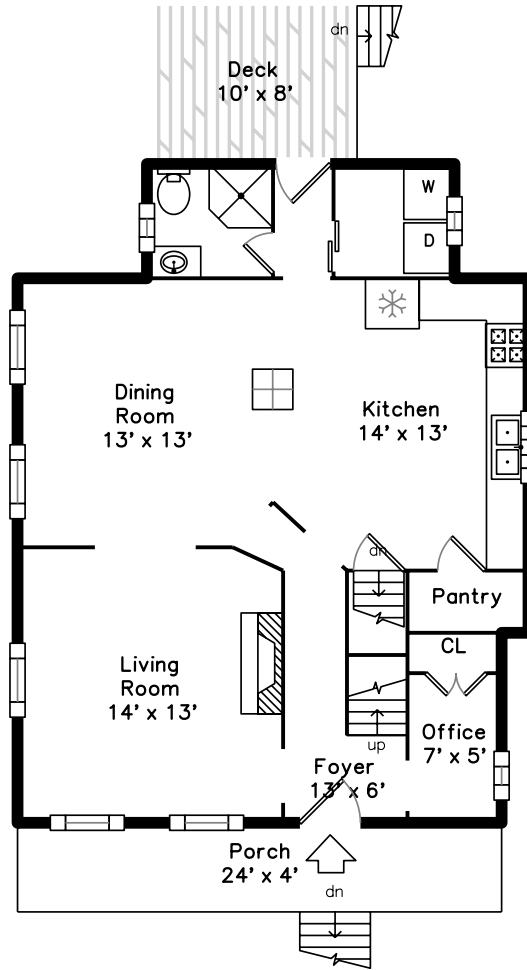


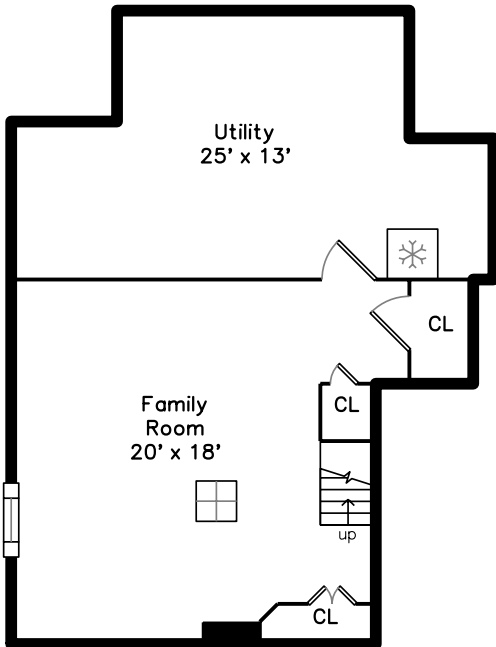
Upper



Main



Lower

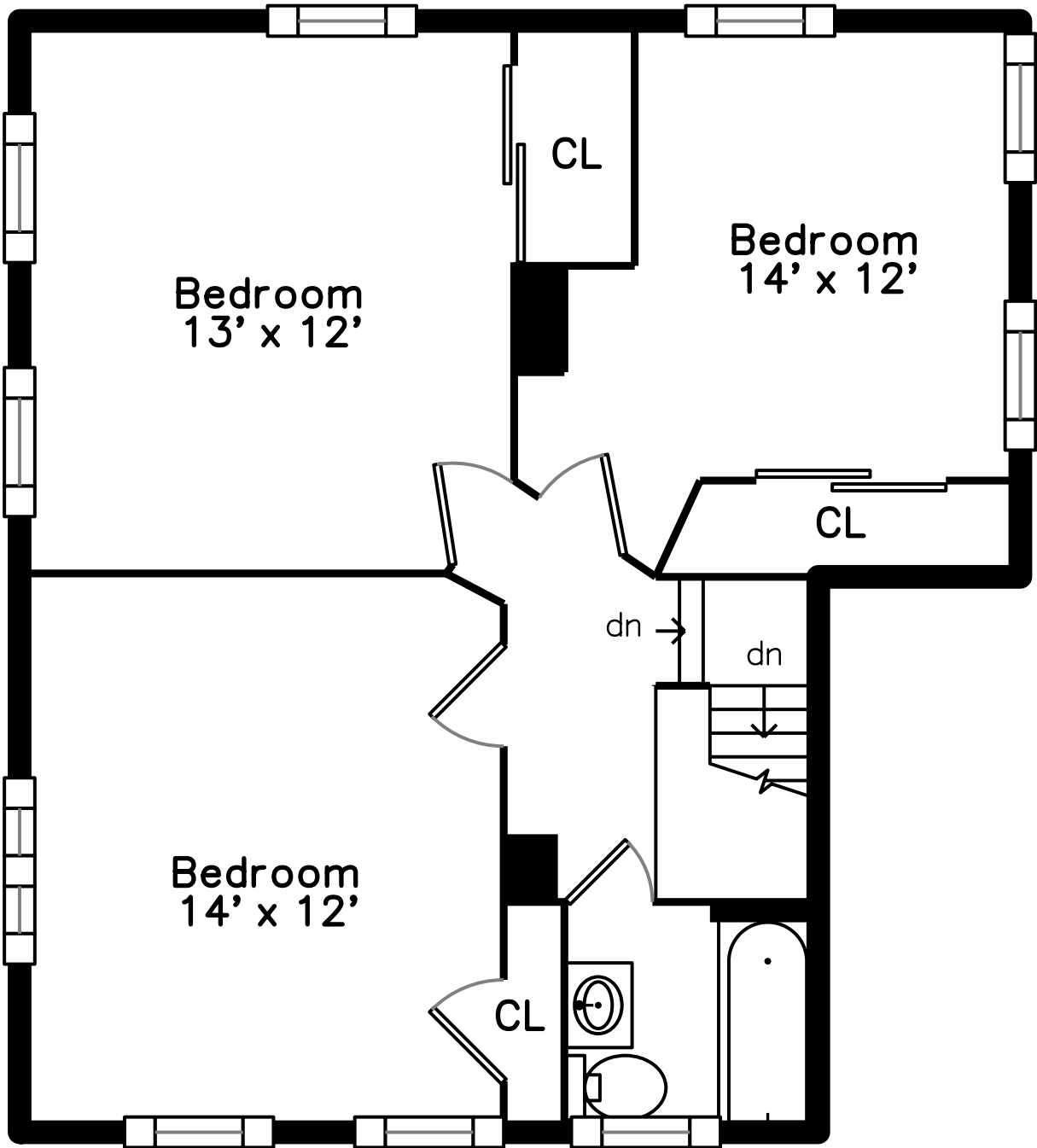


11 Winthrop Street
Malden, MA 02148

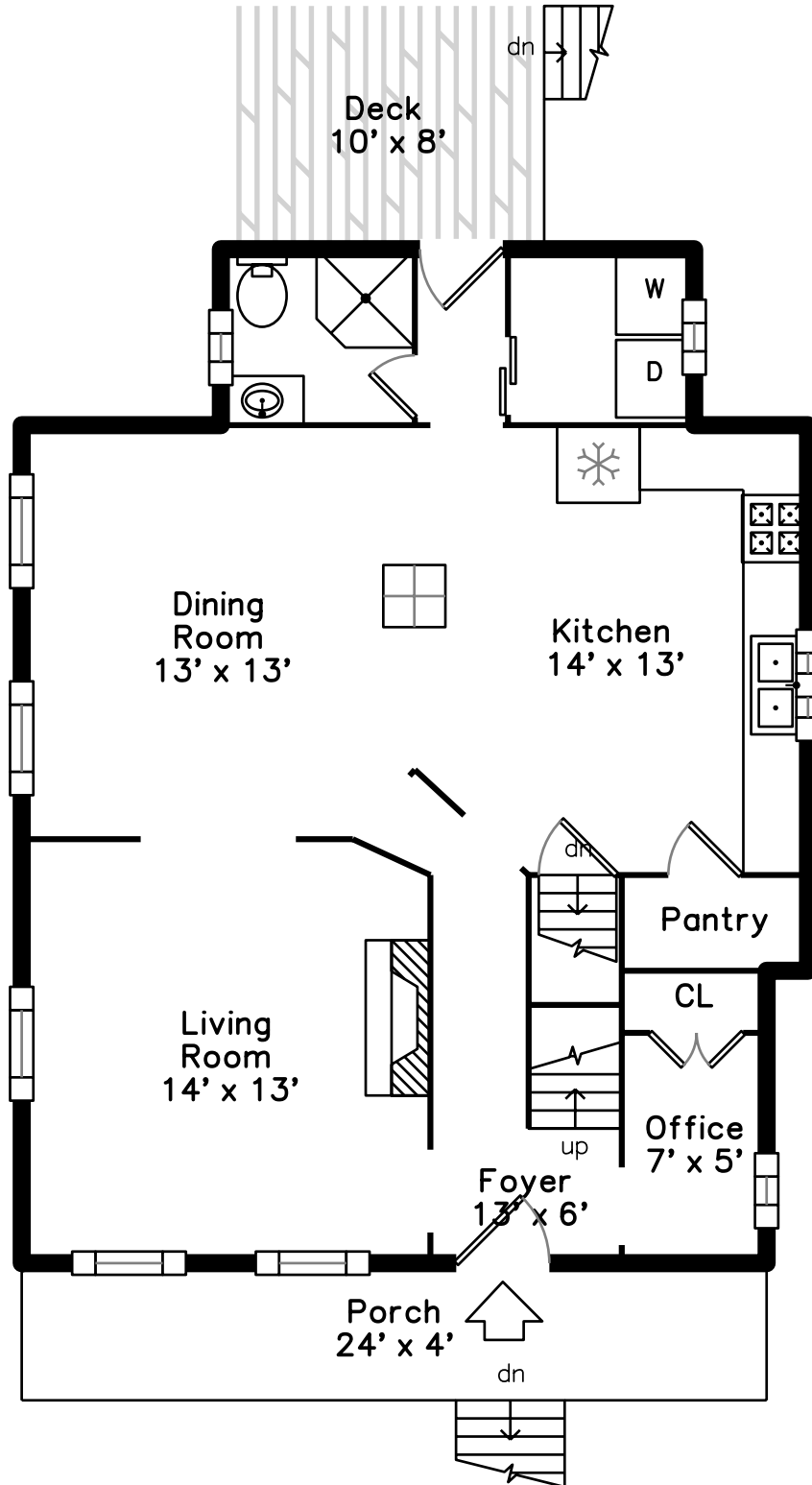
PicturePlan by  vis-home
MORE THAN JUST A FLOORPLAN

Measurements may not be 100% accurate.
Floor plans are provided for convenience only.
Room sizes are not used to calculate area.

Upper



Main





Outside



Outside



3



Back



Back



Living Room



Living Room



Dining Room



Dining Room



Kitchen



Kitchen



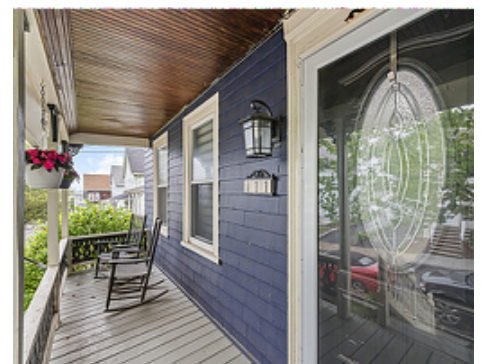
Office



Bathroom



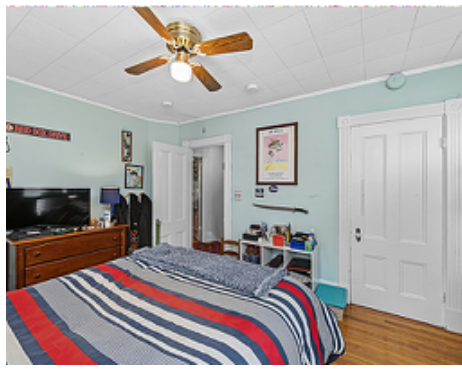
Laundry



Porch



Bedroom



Bedroom



Bedroom



Bedroom



Bedroom



Bedroom



Bathroom



Family Room



Family Room



Garage