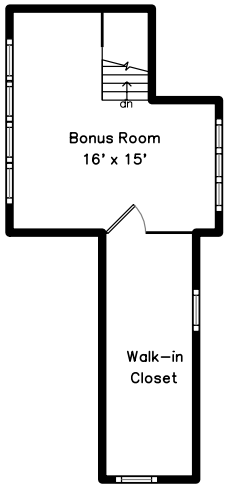
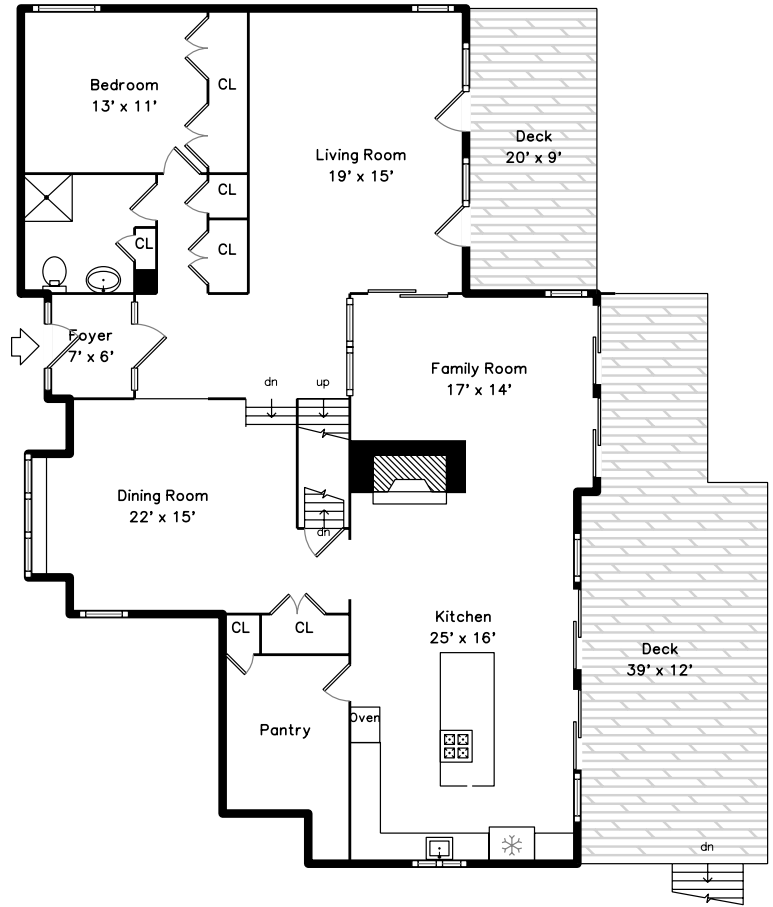


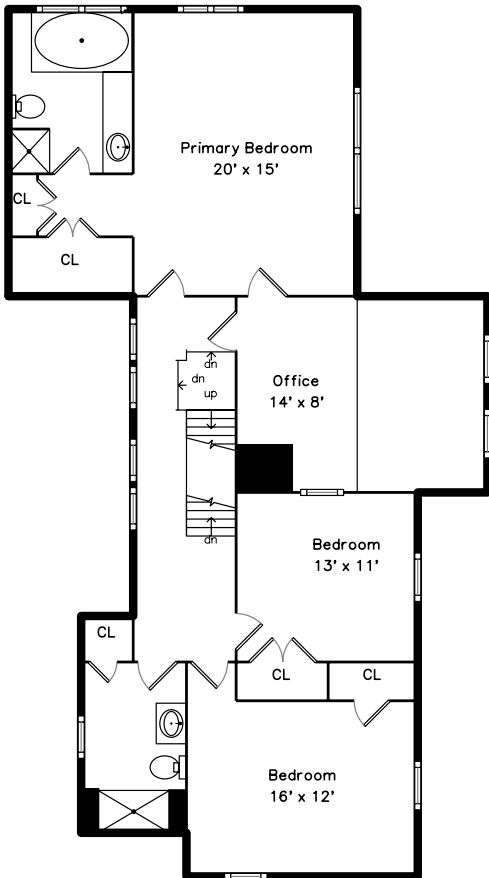
Top



Main



Upper

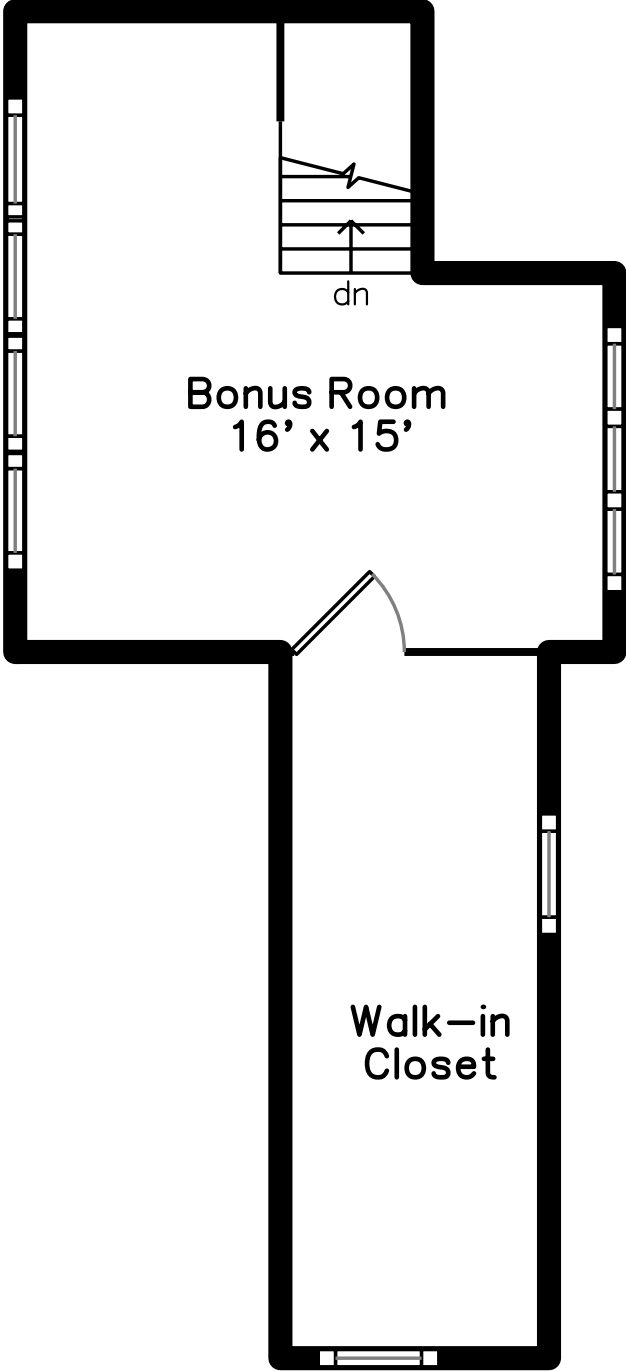


185 Maple Street Stow, MA 01775

PicturePlan by vis-home

Measurements may not be 100% accurate.
Floor plans are provided for convenience only.
Room sizes are not used to calculate area.

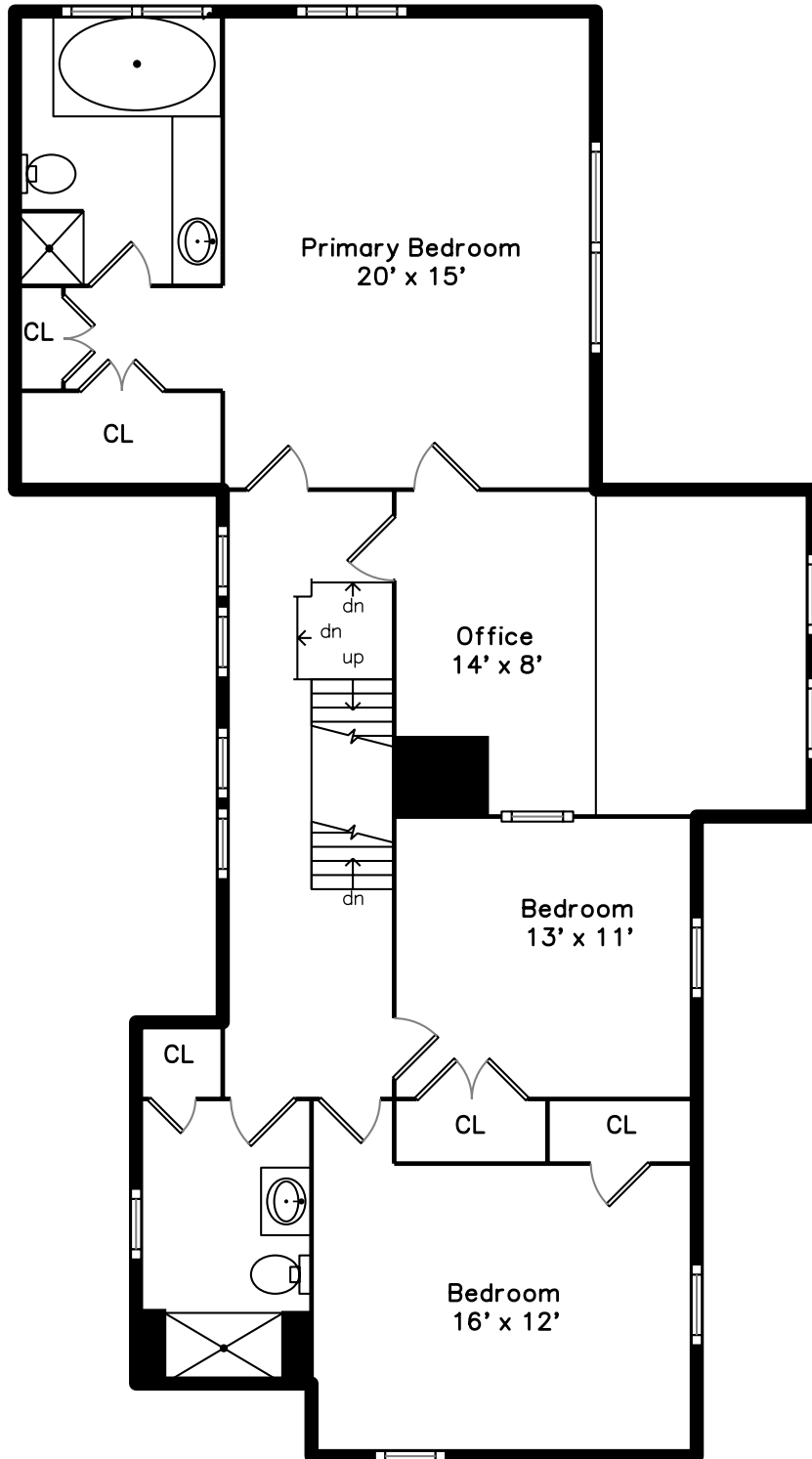
Top



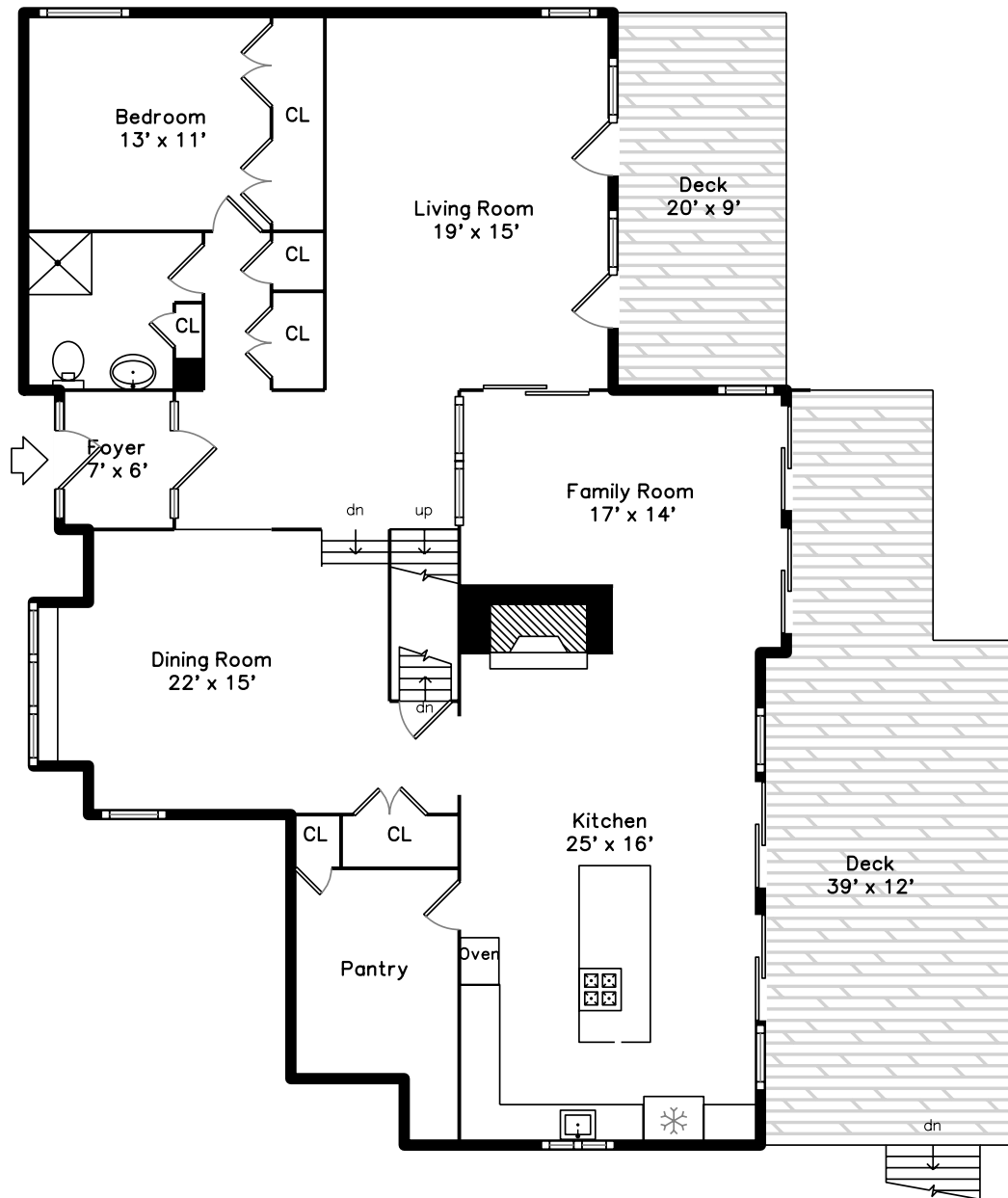
Bonus Room
16' x 15'

Walk-in
Closet

Upper

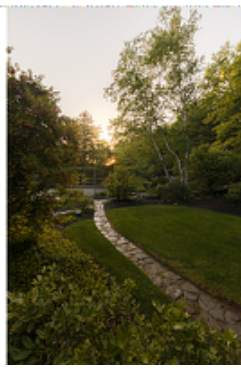


Main





Outside



Outside



Outside



Outside



Outside



Outside



Hall



Outside



Living Room



Living Room



Dining Room



Dining Room



Kitchen



Kitchen



Kitchen



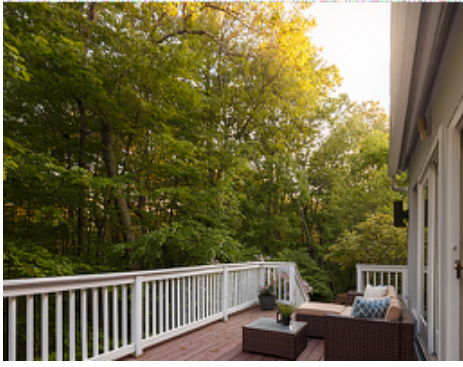
Family Room



Primary Bedroom



Bathroom



Deck



Hall



Hall



Primary Bedroom



Primary Bedroom



Primary Bedroom



Bedroom



Outside



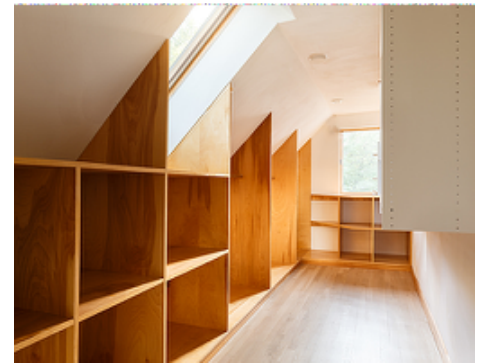
Office



Primary Bathroom



Bathroom



WalkInCloset



Aerial View



Aerial View



Aerial View



Aerial View



Aerial View



Aerial View



Aerial View



Aerial View



Aerial View



Aerial View



Aerial View



Aerial View



Tennis