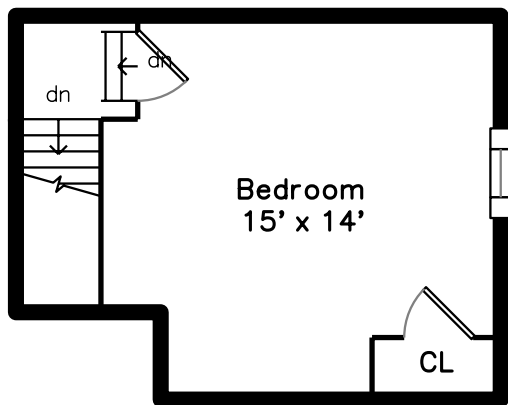
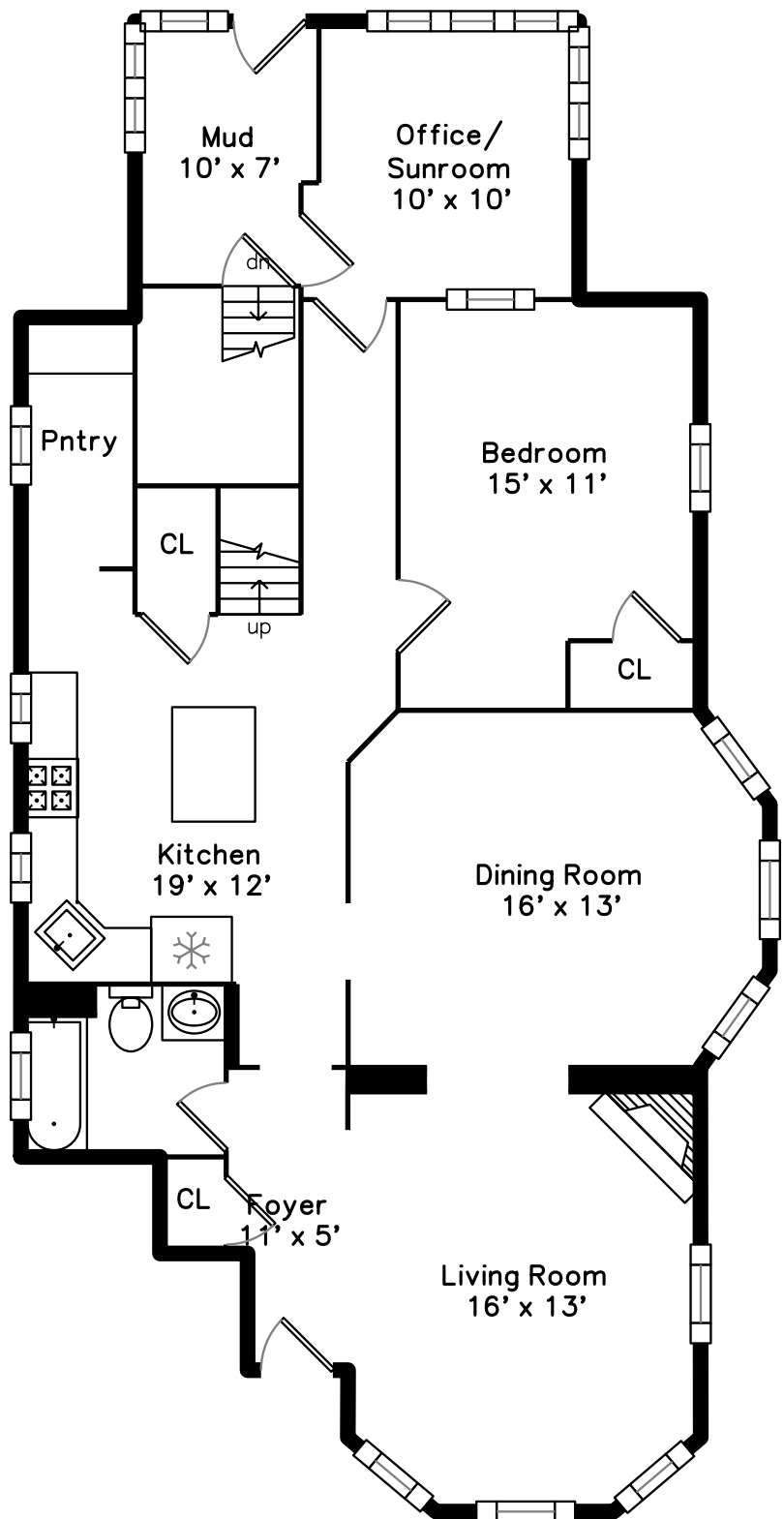


# Upper



# Main

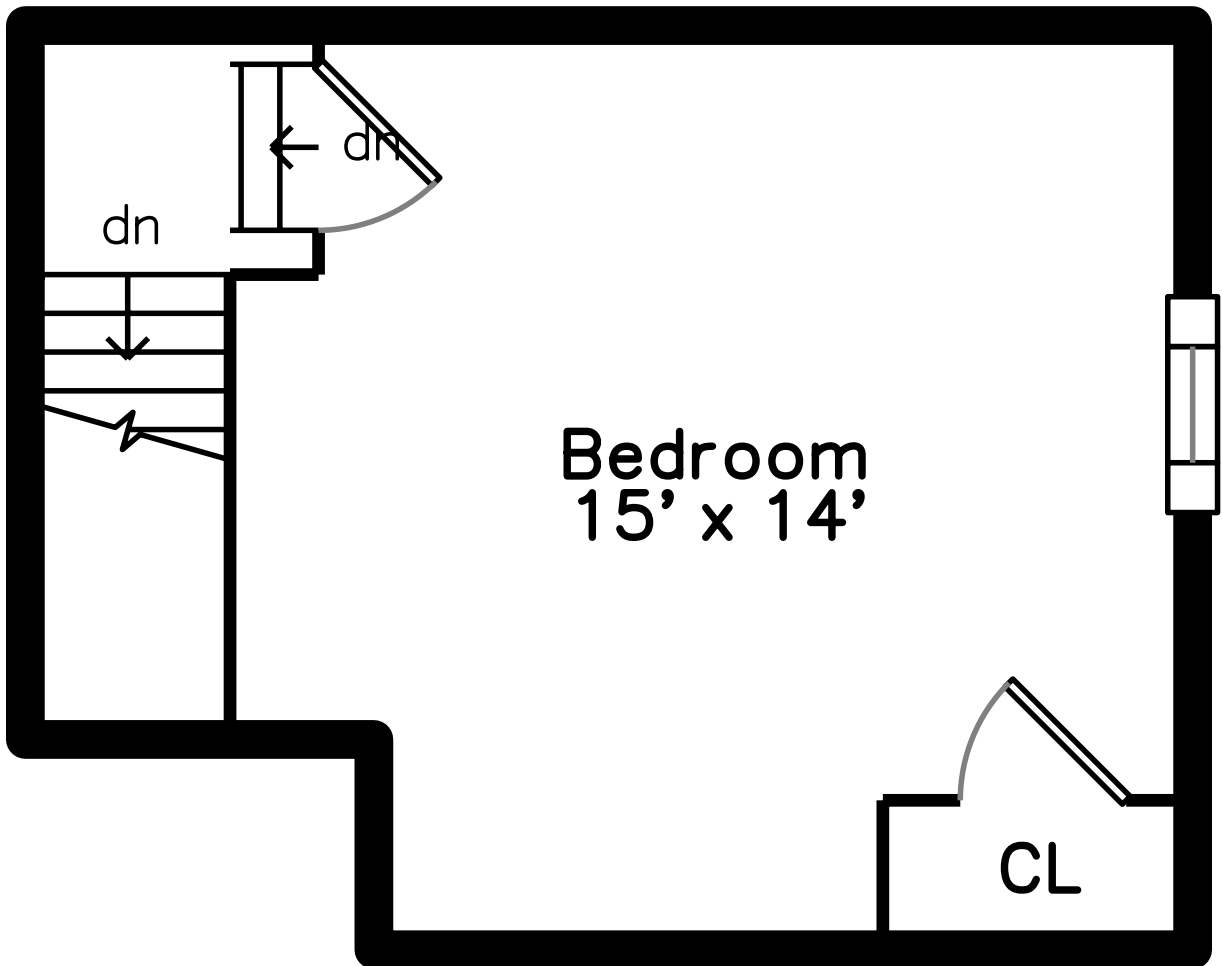


50 Morrison Avenue  
Somerville, MA 02144

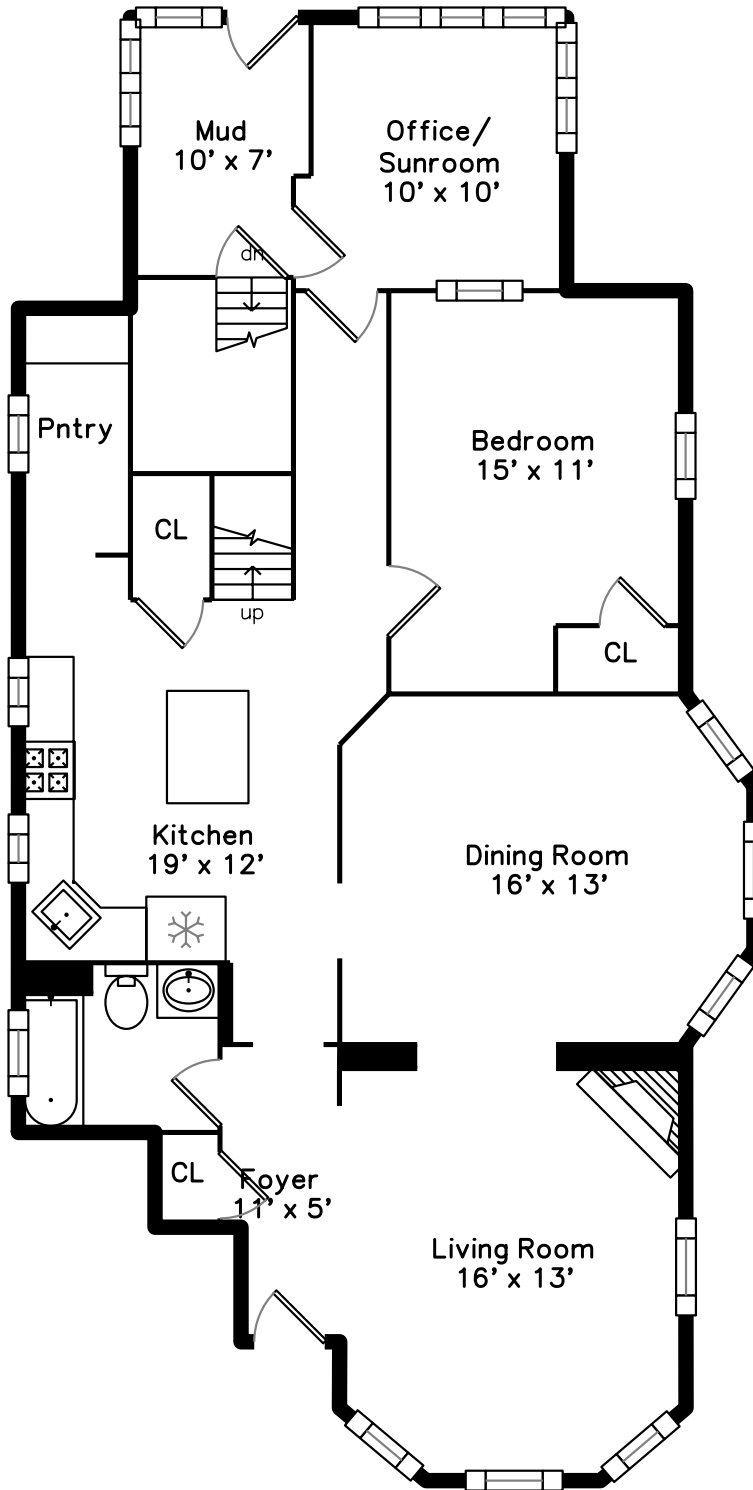
PicturePlan by  vis-home

Measurements may not be 100% accurate.  
Floor plans are provided for convenience only.  
Room sizes are not used to calculate area.

# Upper



# Main





Outside



Outside



Outside



Outside



Outside



Back



Back



Back



Back



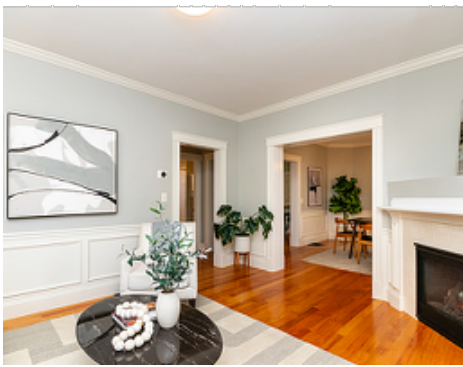
Living Room



Living Room



Living Room



Living Room



Dining Room



Dining Room



Dining Room



Dining Room



Kitchen



Kitchen



Kitchen



Kitchen



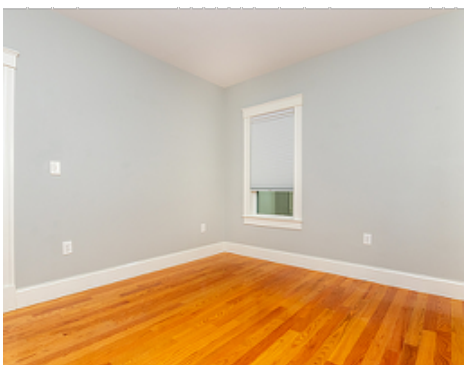
Bedroom



Bedroom



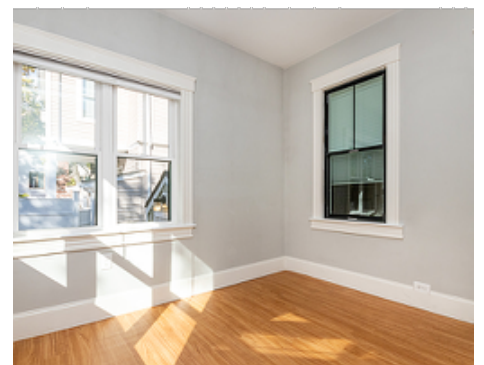
Bedroom



Bedroom



Bonus Room



Bonus Room



Bonus Room



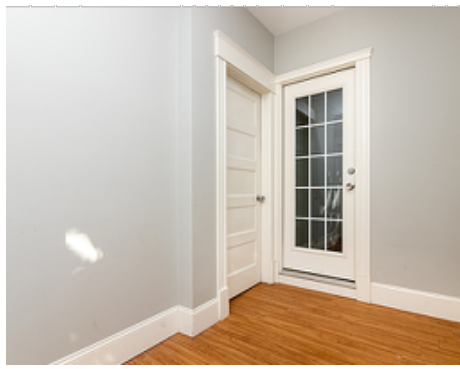
Mud Room



Mud Room



Mud Room



Mud Room



Pantry



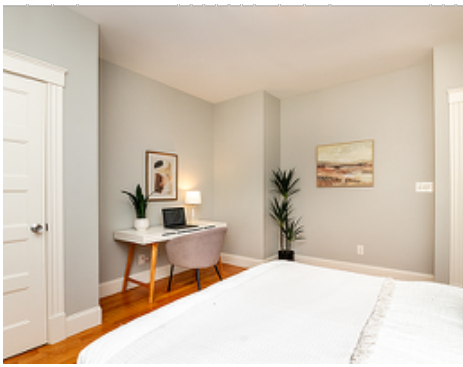
Bathroom



Bedroom



Bedroom



Bedroom



Bedroom