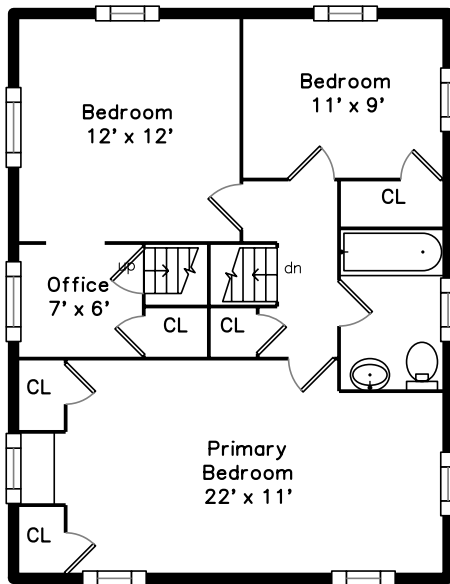
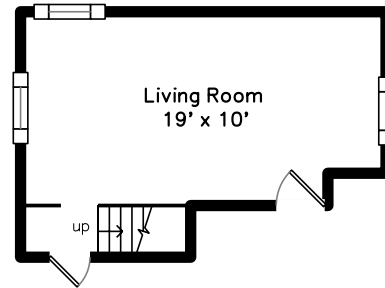


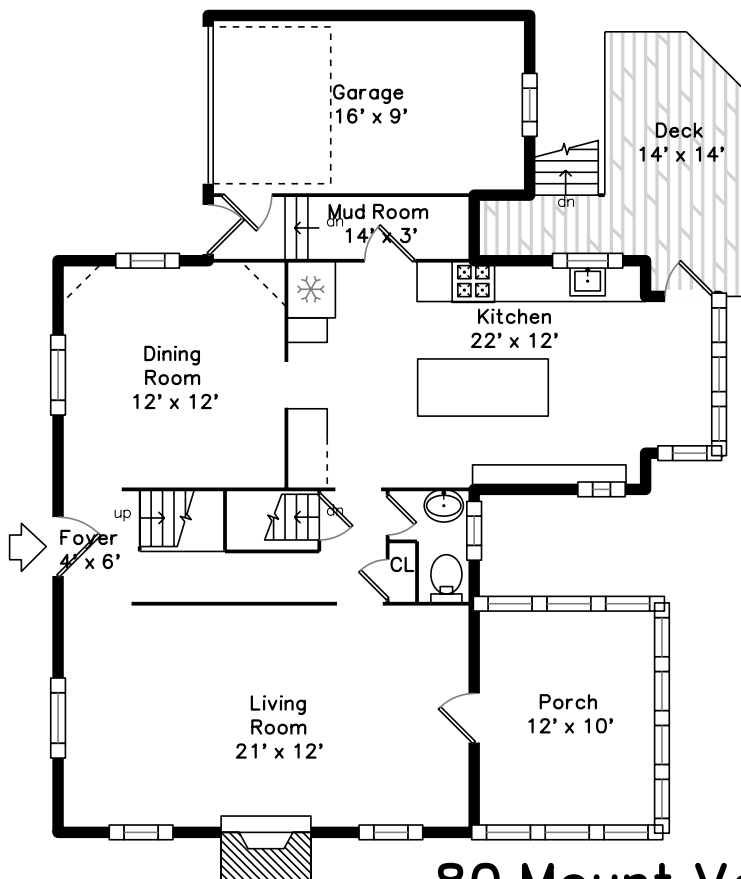
Upper



Lower



Main

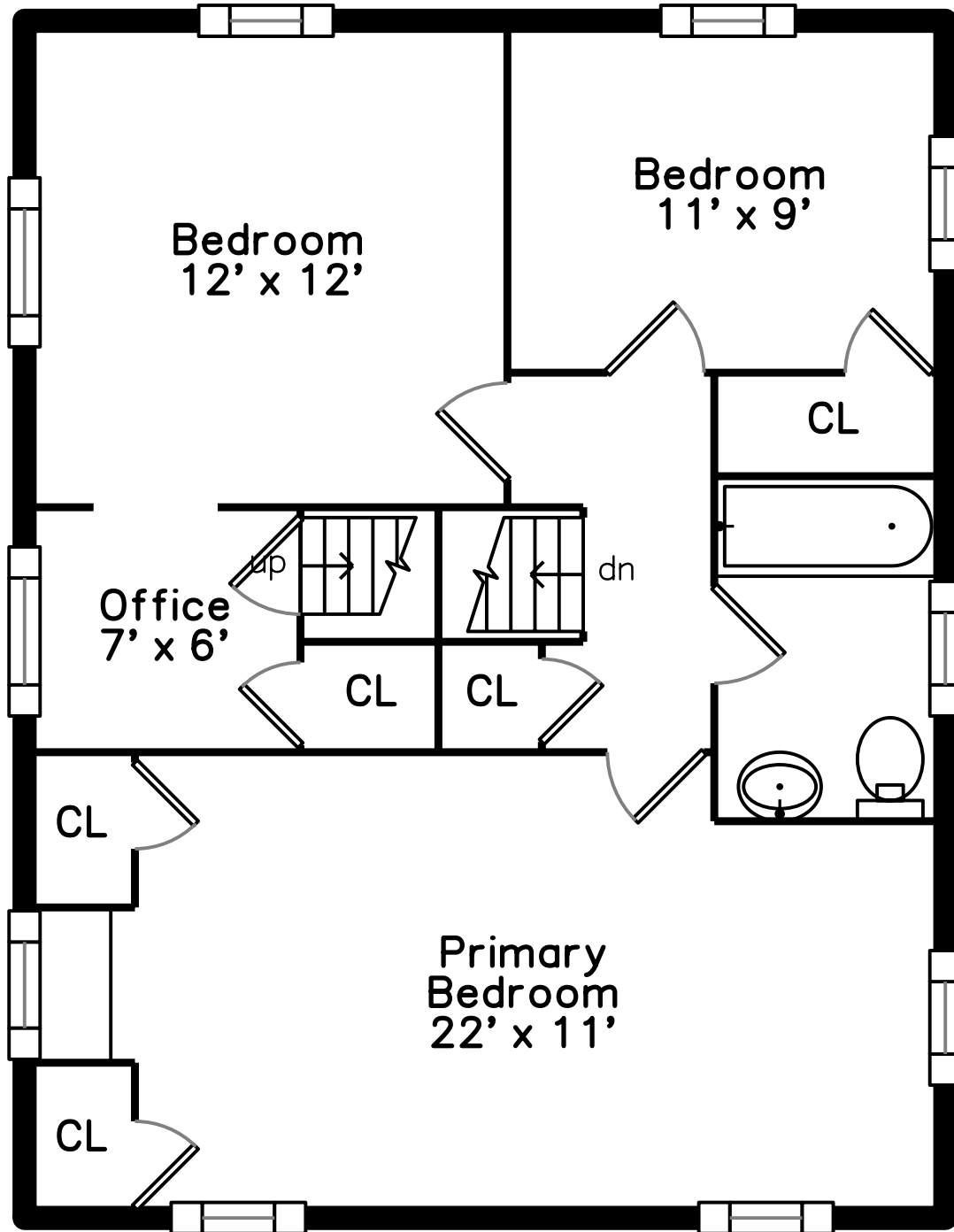


**80 Mount Vernon Street
West Roxbury, MA 02132**

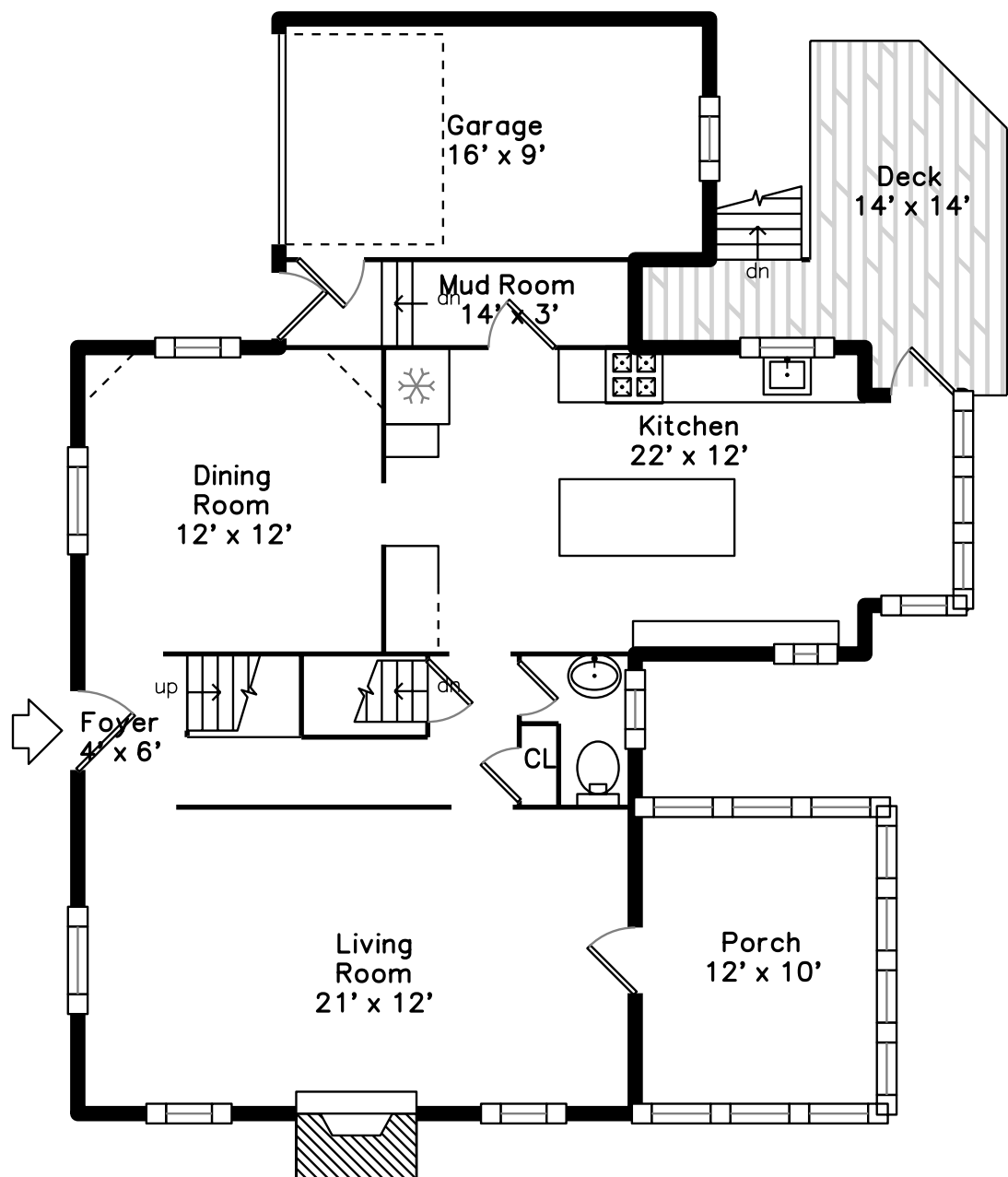
PicturePlan by  vis-home

Measurements may not be 100% accurate.
Floor plans are provided for convenience only.
Room sizes are not used to calculate area.

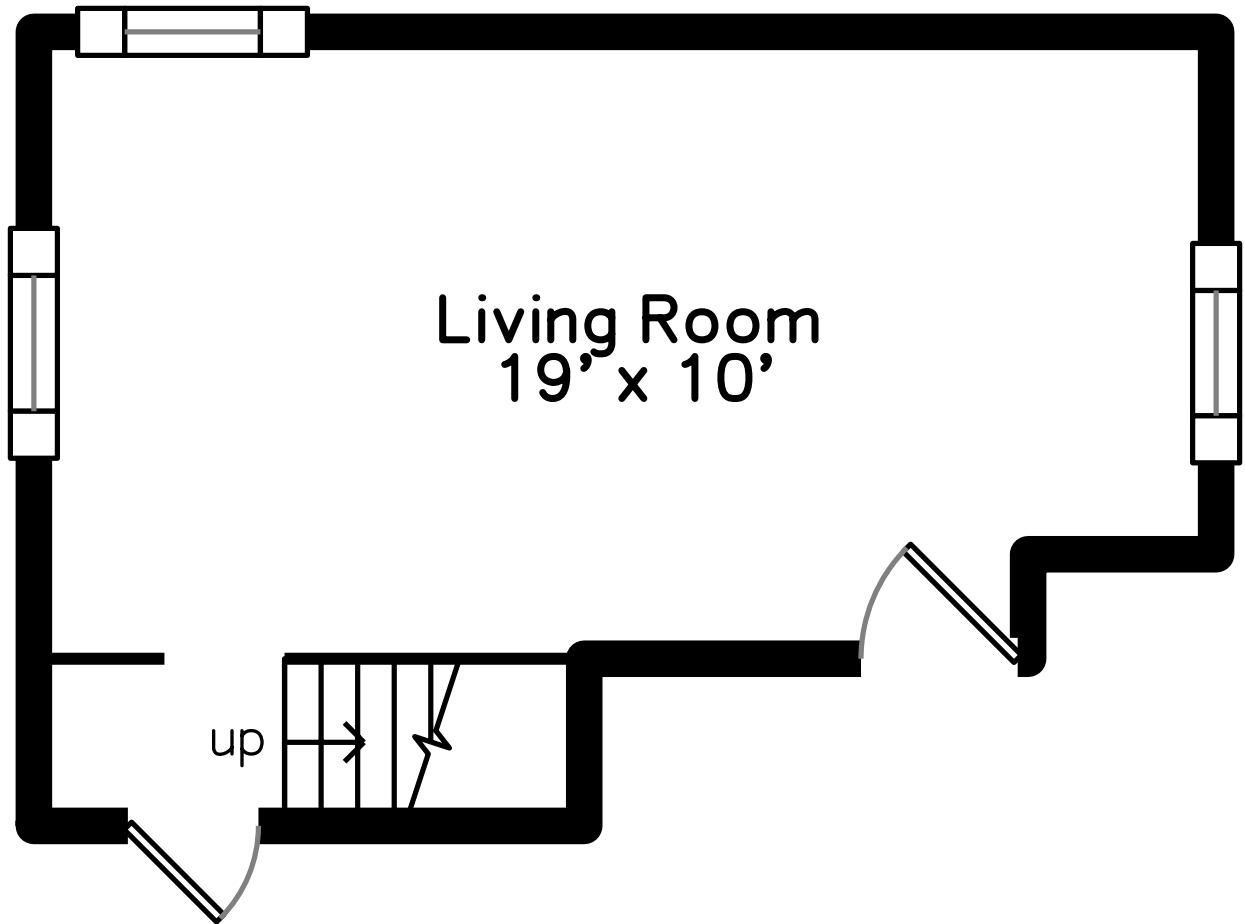
Upper



Main



Lower





Outside



Outside



Outside



Outside



Back



Back



Back



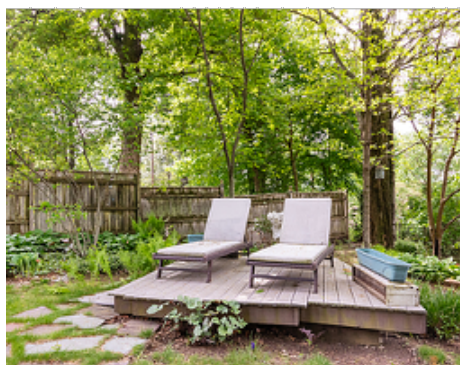
Back



Back



Back



Back



Living Room



Living Room



Living Room



Living Room



Living Room



Dining Room



Dining Room



Dining Room



Dining Room



Kitchen



Kitchen



Kitchen



Kitchen



Porch



Porch



Porch



Deck



Deck



Deck



Deck



Primary Bedroom



Primary Bedroom



Primary Bedroom



Primary Bedroom



Bedroom



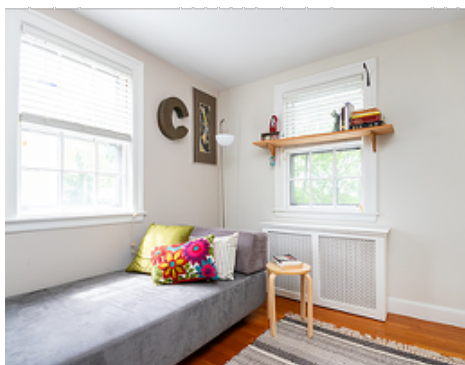
Bedroom



Bedroom



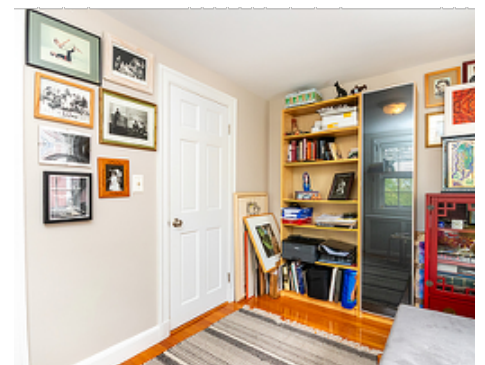
Bedroom



Bedroom



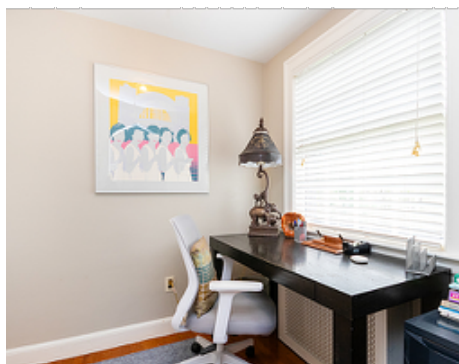
Bedroom



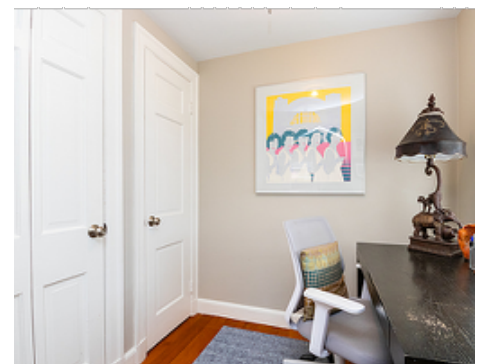
Bedroom



Bedroom



Office



Office



Office



Bathroom



Bathroom



Living Room



Living Room



Living Room



Living Room