

Bonus Room
16' x 8'

Porch
13' x 12'

Laundry
12' x 9'

Kitchen
13' x 13'

Dining Room
16' x 13'

Family Room
17' x 14'

Bedroom
15' x 12'

Living Room
17' x 14'

Utility Room
13' x 7'

Foyer
10' x 5'

Util.

CL (Closets)

D (Dishwasher), **W** (Washing Machine), **S** (Stove)

up (Stairs)

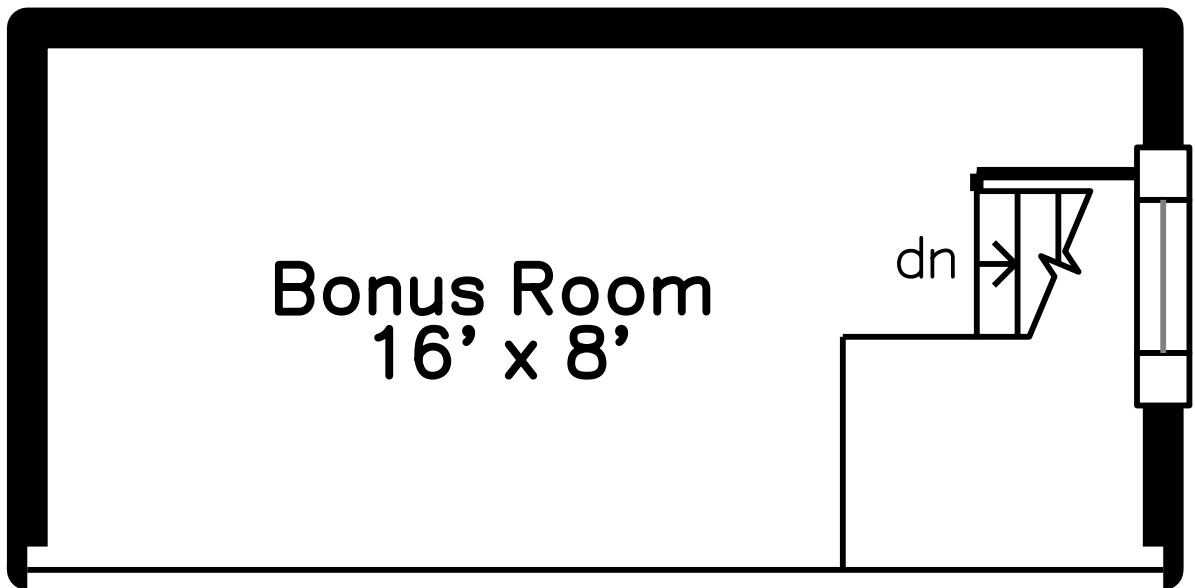
Wheelchair Ramp (indicated by a ramp symbol and a wheelchair icon)

The floor plan for the second floor features a central hallway with a staircase labeled 'dn' (down). To the top left is a **Bedroom** measuring **14' x 10'**. To the bottom left is a **Bedroom** measuring **20' x 14'**. To the right of the central hallway is the **Primary Bedroom** measuring **17' x 13'**. A **Bathroom** is located between the Primary Bedroom and the central hallway. Several closets, labeled 'CL', are distributed throughout the plan, including a large closet in the top-left bedroom, a closet in the bottom-left bedroom, and multiple closets in the primary bedroom and bathroom area. The plan also shows a balcony or terrace area at the top left and a set of stairs labeled 'up' at the bottom right.

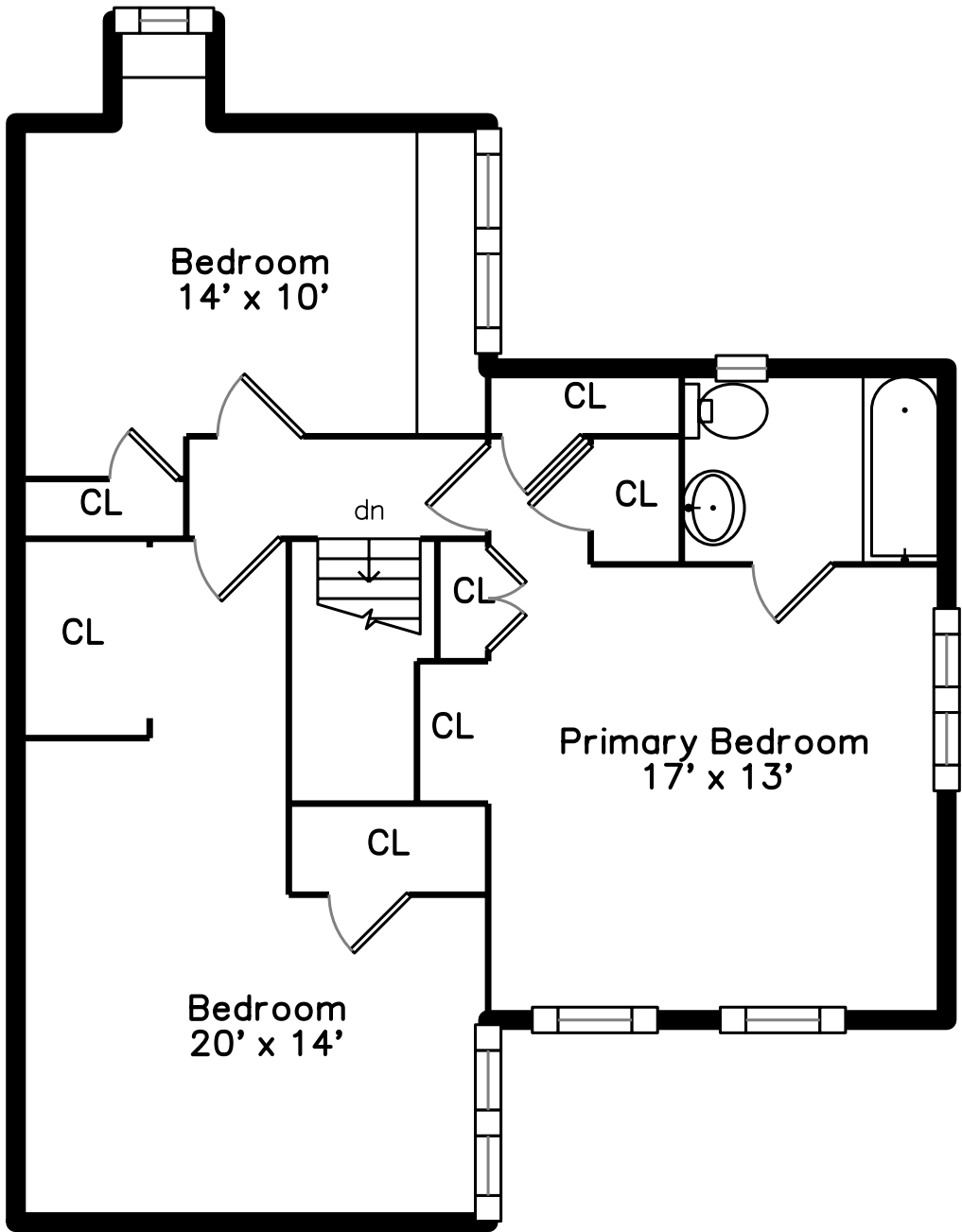
PicturePlan by  vis-home
MORE THAN JUST A FLOORPLAN

Measurements may not be 100% accurate.
Floor plans are provided for convenience only.
Room sizes are not used to calculate area.

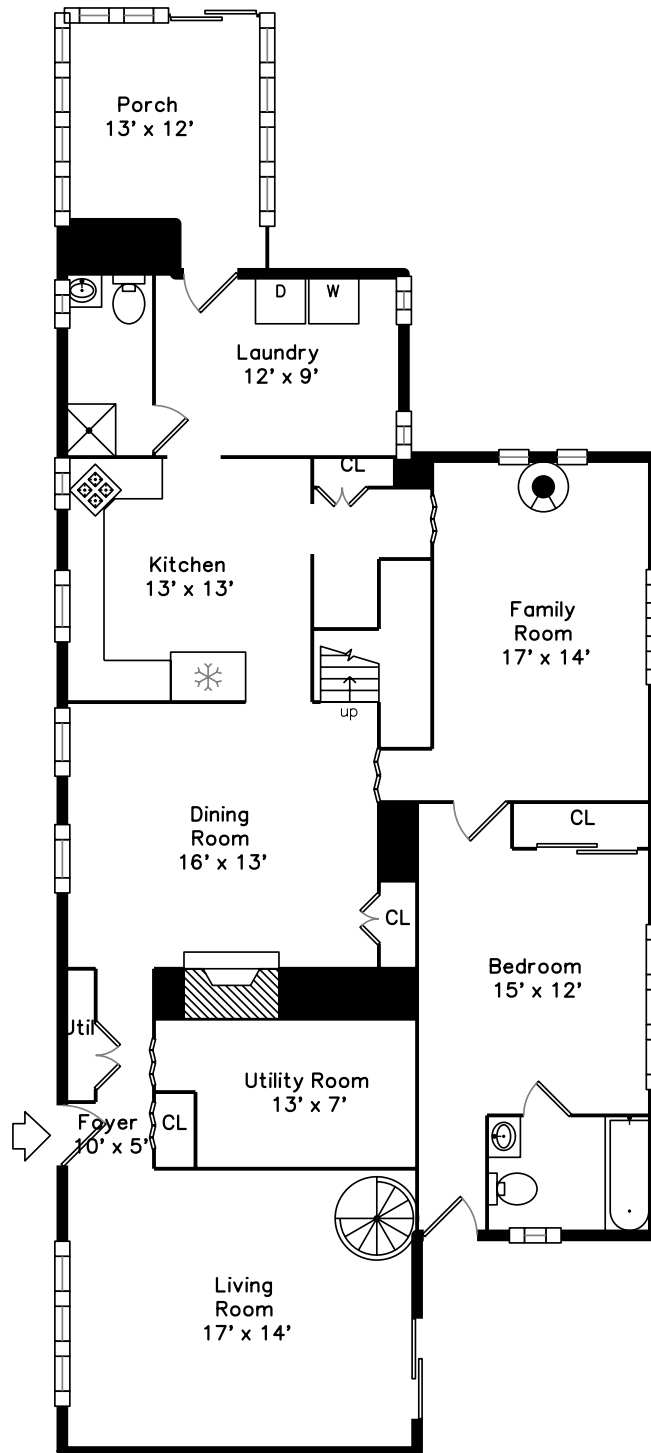
Loft



Upper



Main





Outside



Outside



Back



Back



Back



Back



Back



Back



Back



Garage



Living Room



Living Room



Living Room



Living Room



Dining Room



Dining Room



Dining Room



Dining Room



Outside



Kitchen



Kitchen



Kitchen



Kitchen



Family Room



Family Room



Family Room



Family Room



Bedroom



Bedroom



Bedroom



Bedroom



Bathroom



Bathroom



Bathroom



Laundry



Porch



Porch



Primary Bedroom



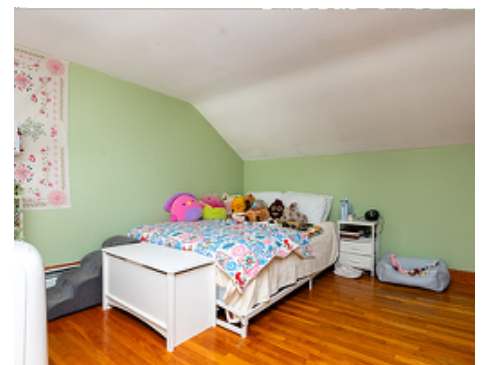
Primary Bedroom



Primary Bedroom



Bedroom



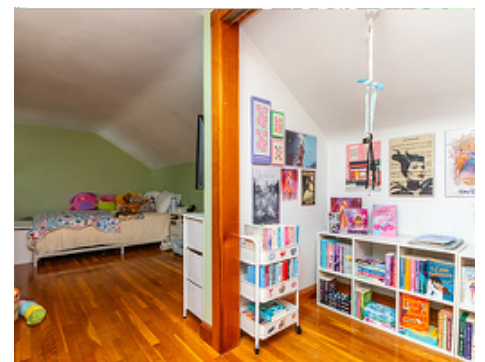
Bedroom



Bedroom



Bedroom



Bedroom



Bedroom



Bedroom



Bedroom



Bedroom



Bathroom



Bonus Room



Bonus Room