

Deck  
6' x 8'

Kitchen  
19' x 14'

Living Room  
19' x 17'

CL

dn

up

**Bedroom**  
14' x 11'

**Primary Bedroom**  
16' x 12'

The floor plan includes a bathroom with a toilet and sink, a walk-in wardrobe (W/D), and several closets (CL). Stairs lead down from the Primary Bedroom area.

Utility Room  
19' x 7'

Garage  
22' x 11'

Foyer<sup>up</sup>  
5' x 7'

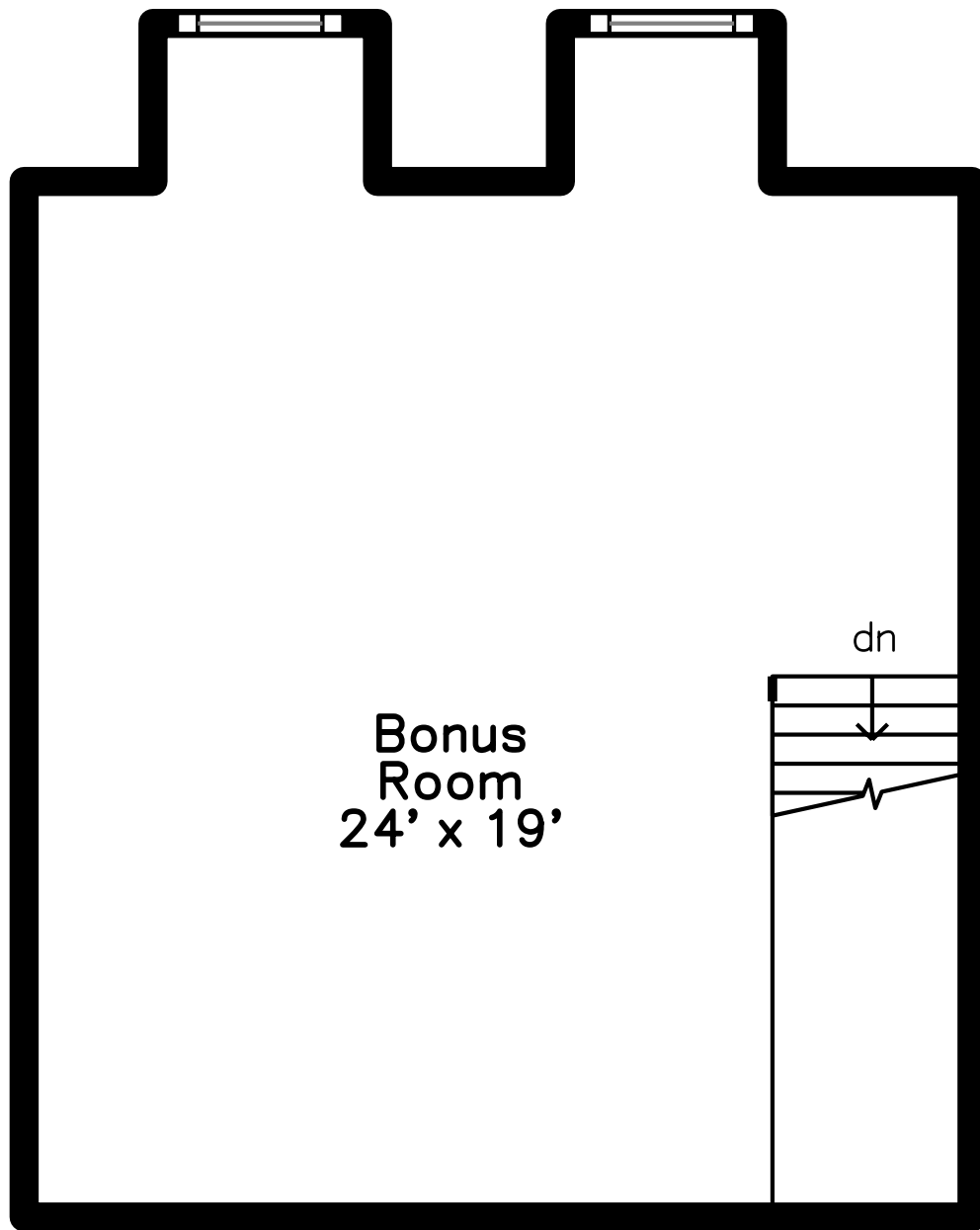
WH

CL

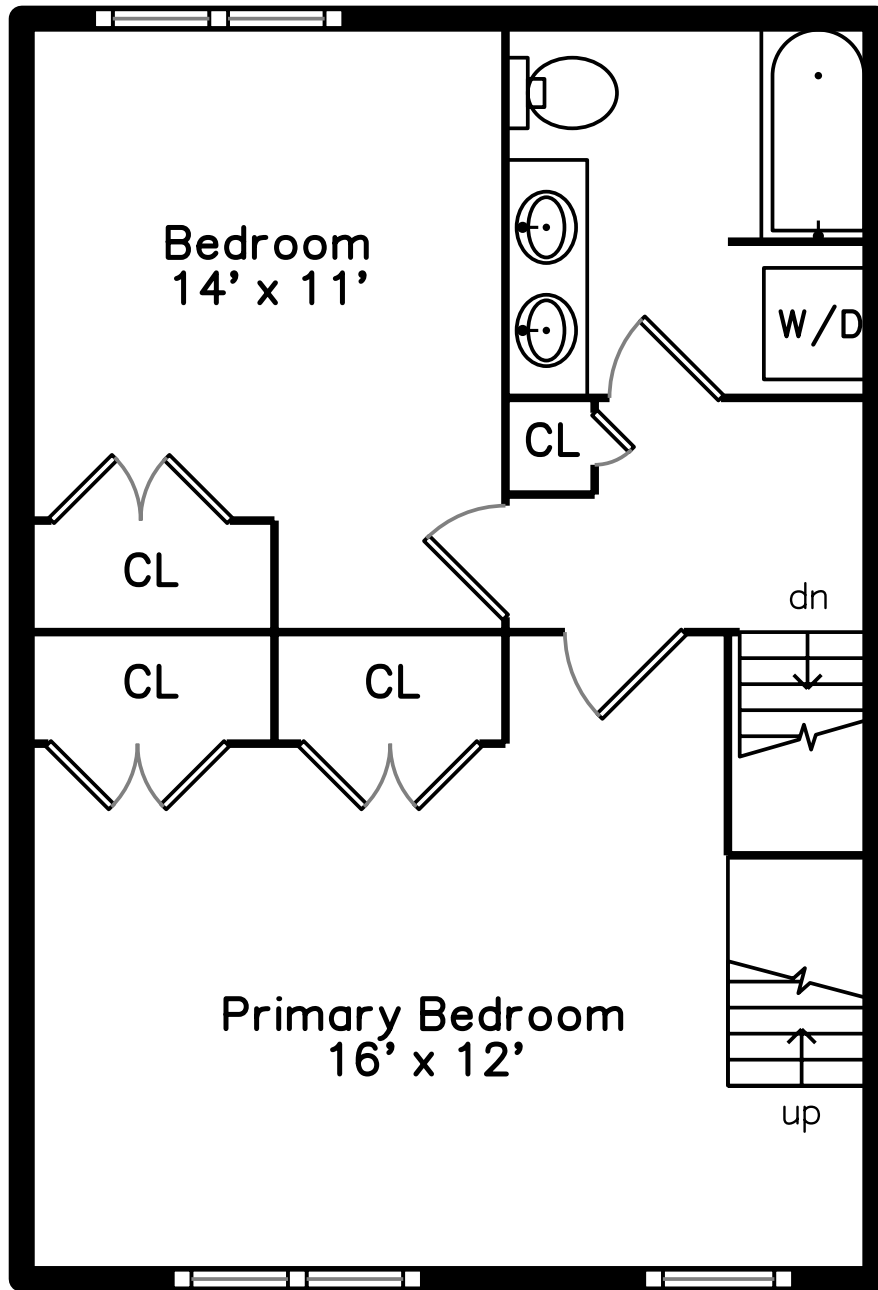
PicturePlan by  vis-home  
MORE THAN JUST A FLOORPLAN

Measurements may not be 100% accurate.  
Floor plans are provided for convenience only.  
Room sizes are not used to calculate area.

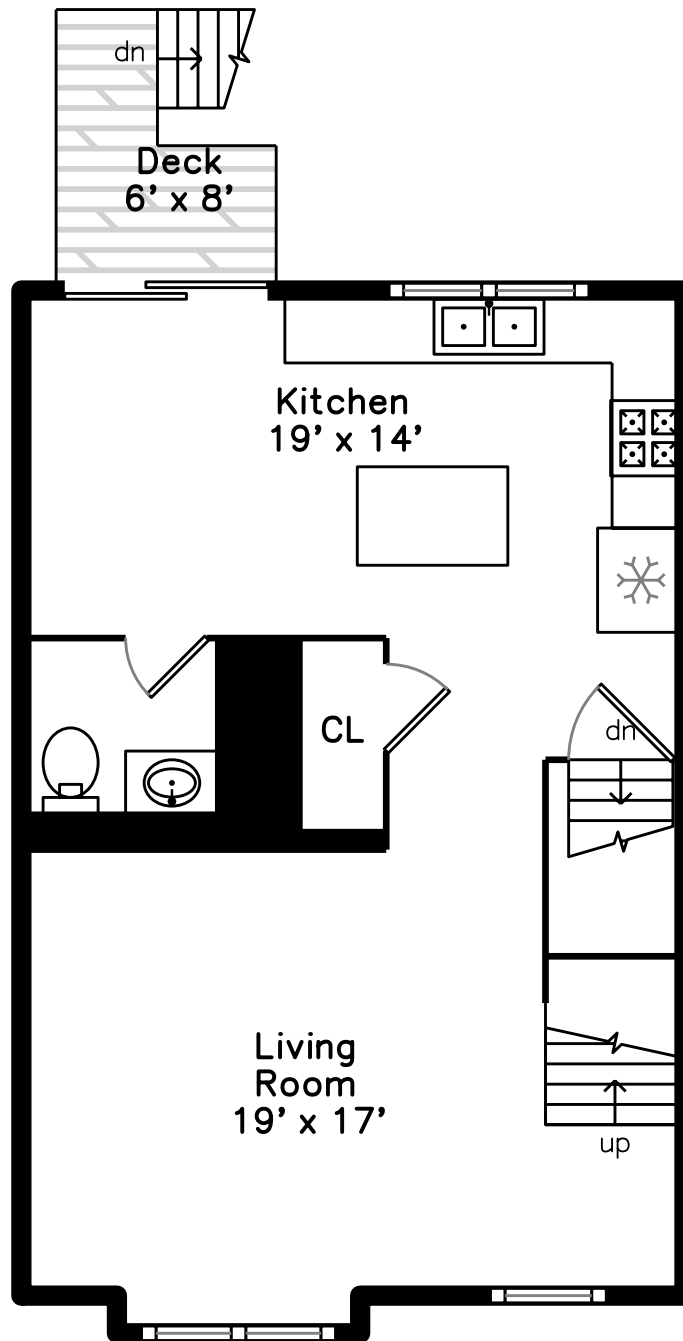
# Top



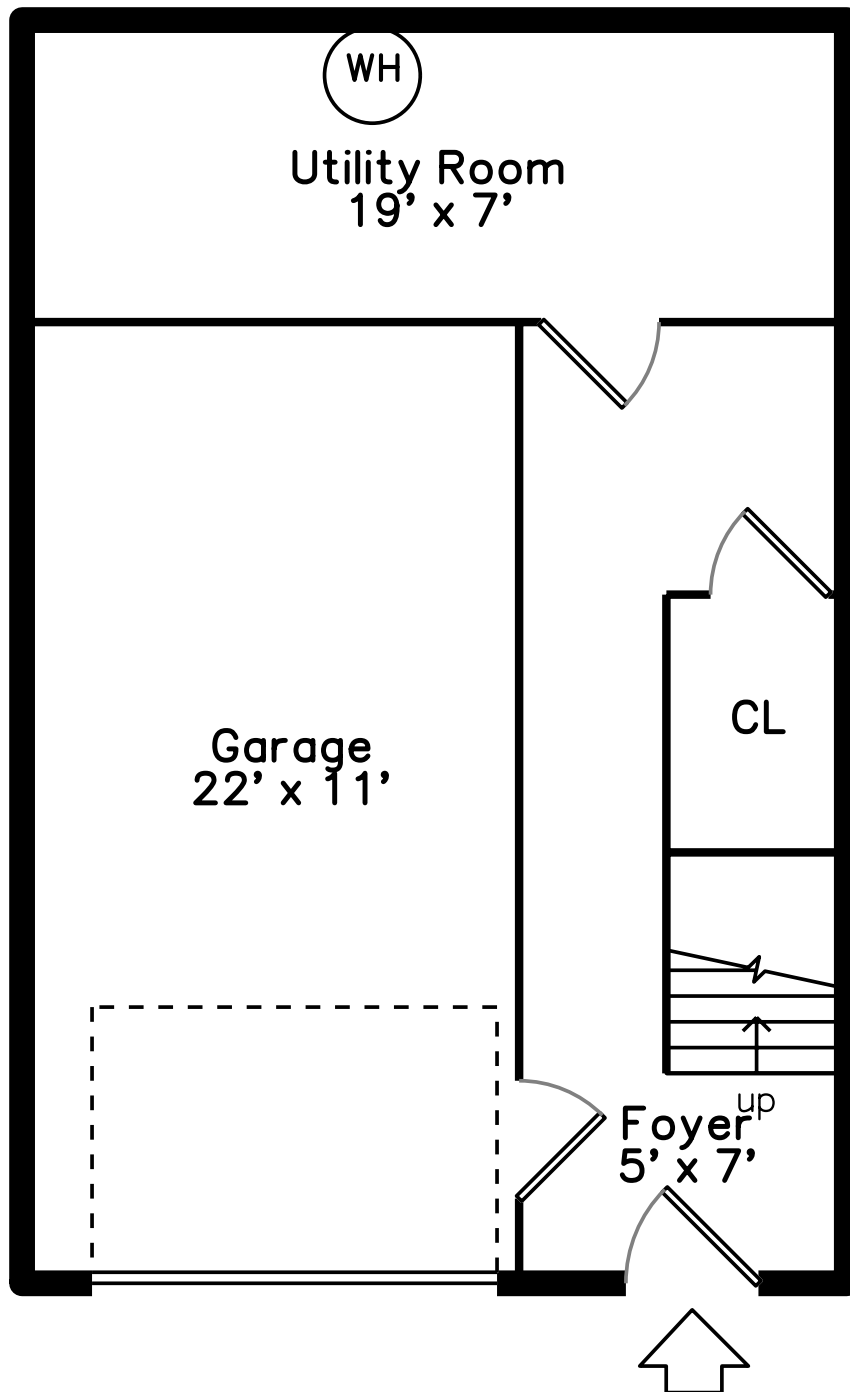
# Upper



# Main



# Lower





Outside



Outside



Outside



Back



Back



Back



Living Room



Living Room



Living Room



Living Room



Kitchen



Kitchen



Kitchen



Kitchen



Kitchen



Kitchen



Powder Room



Deck



Deck



Bedroom



Bedroom



Primary Bedroom



Primary Bedroom



Primary Bedroom



Bathroom



Bathroom



Bonus Room



Bonus Room



Foyer