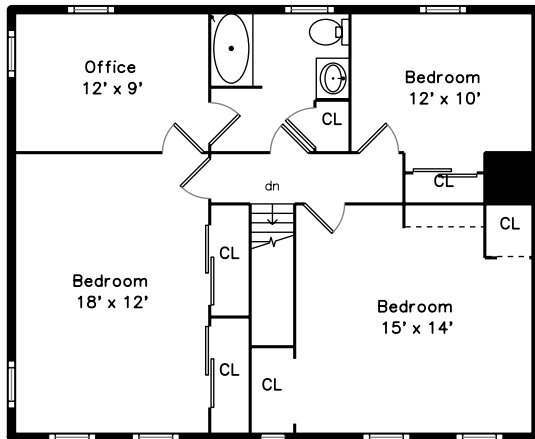
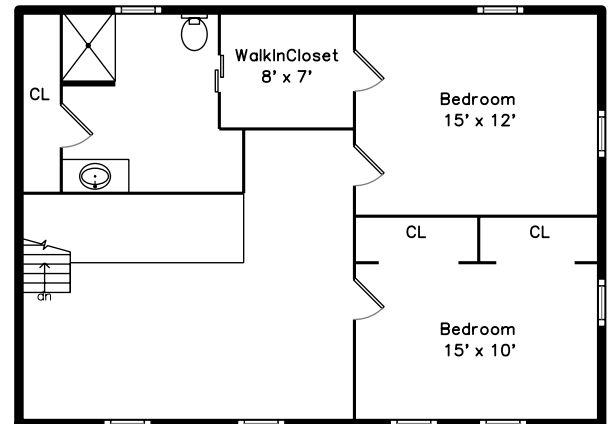


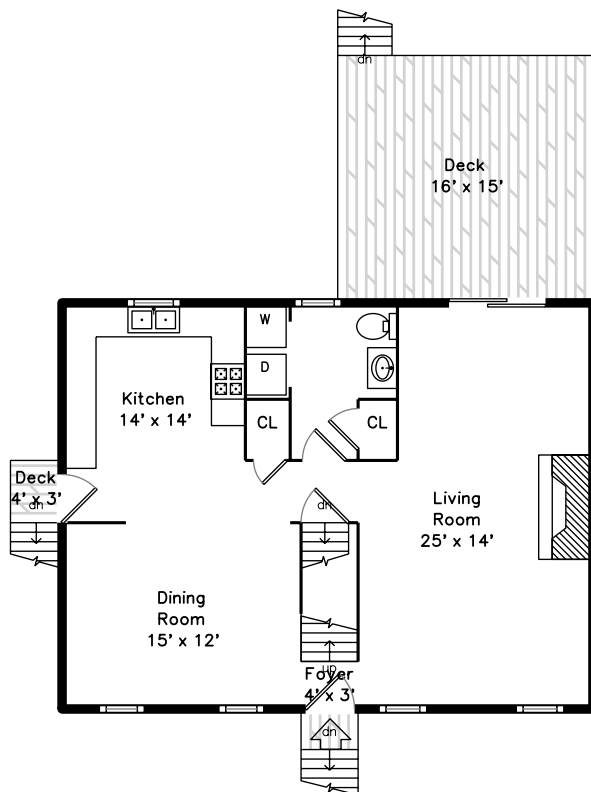
Unit #1 – Upper



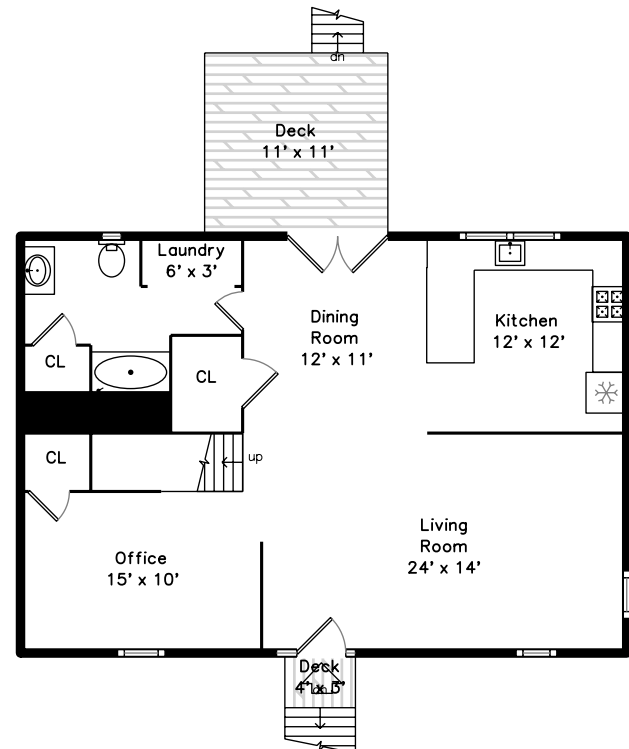
Unit #2 – Upper



Unit #1 – Main



Unit #2 – Main

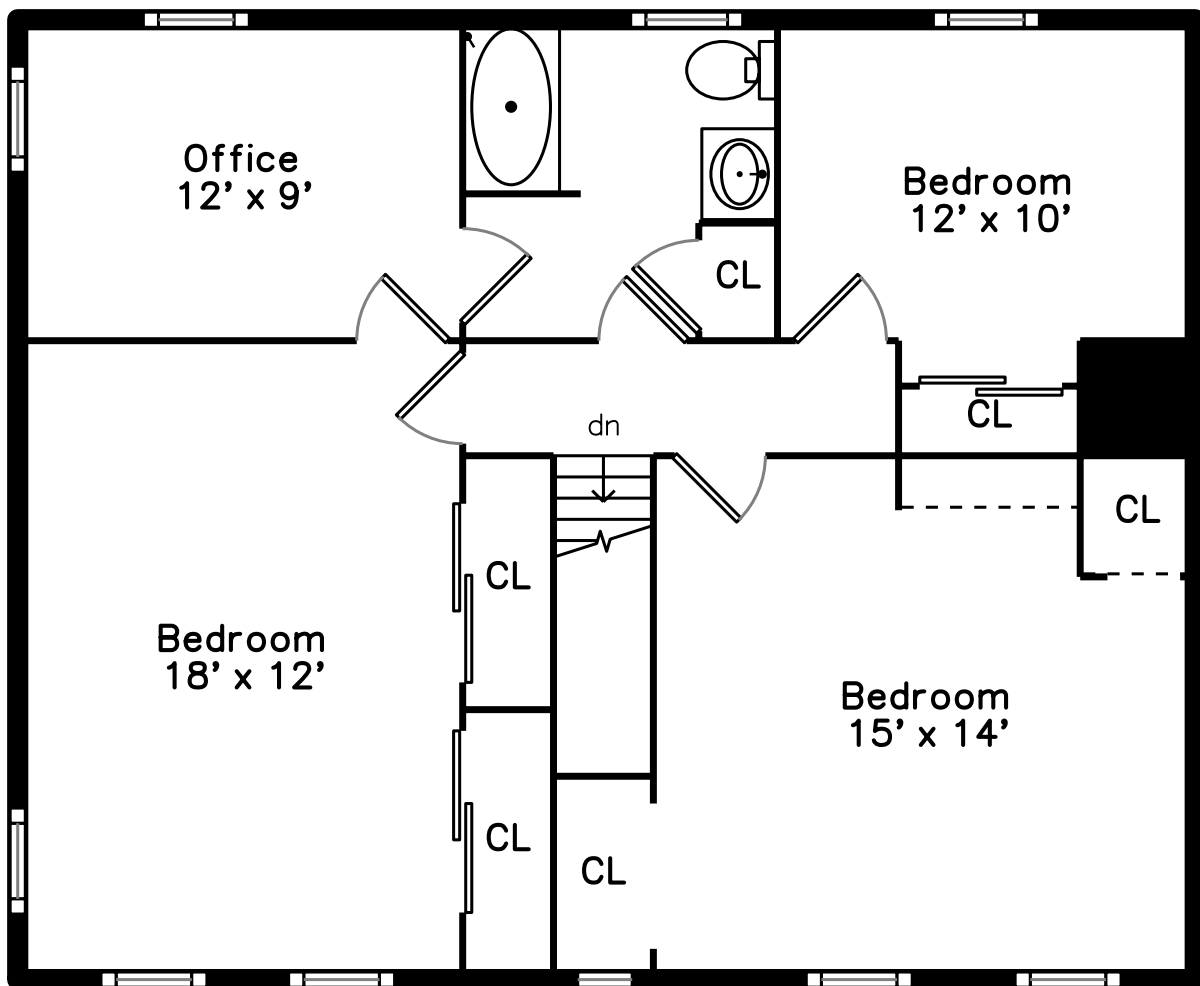


1969 County Street
Taunton, MA 02718

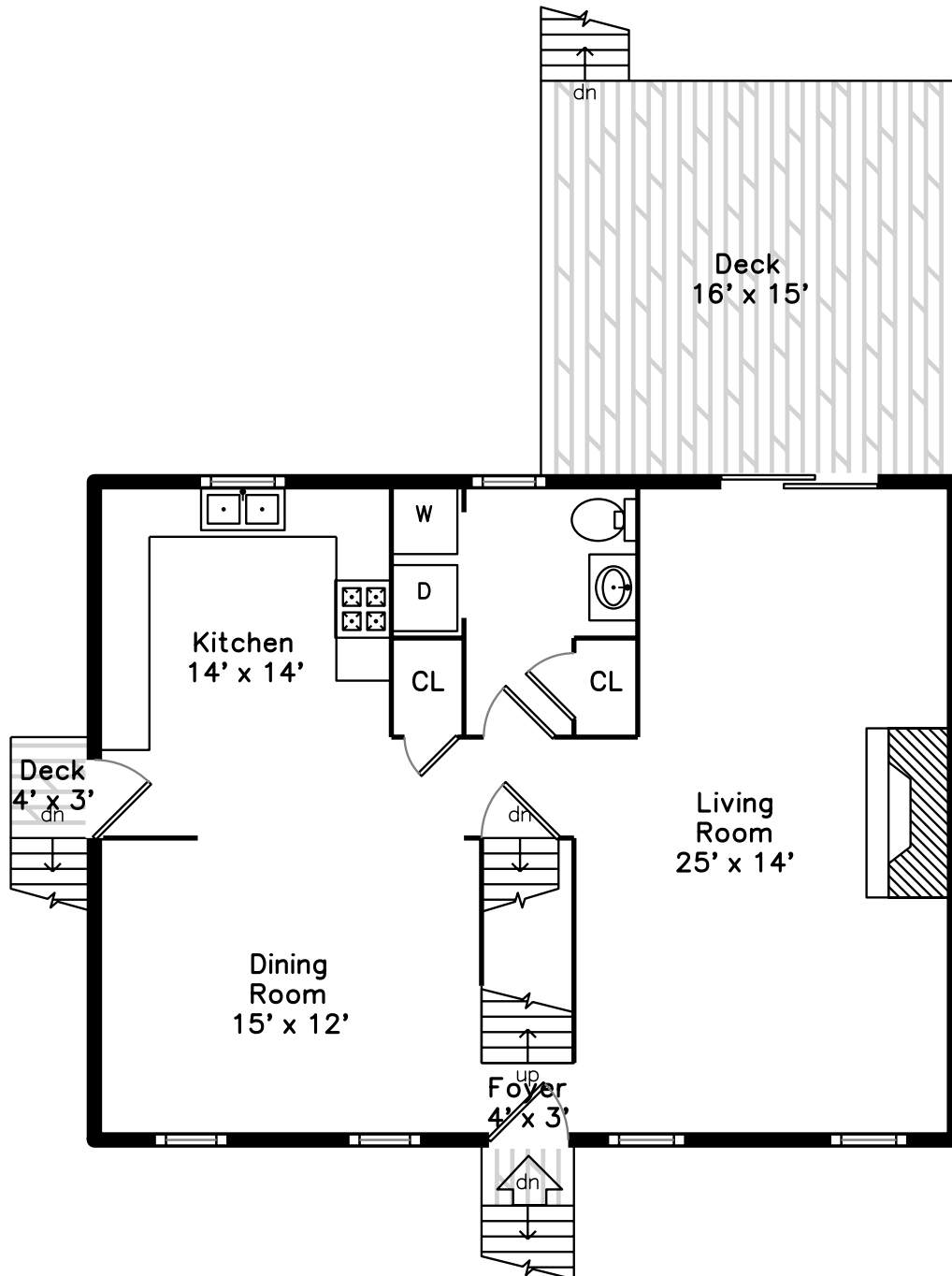
PicturePlan by  vis-home

Measurements may not be 100% accurate.
Floor plans are provided for convenience only.
Room sizes are not used to calculate area.

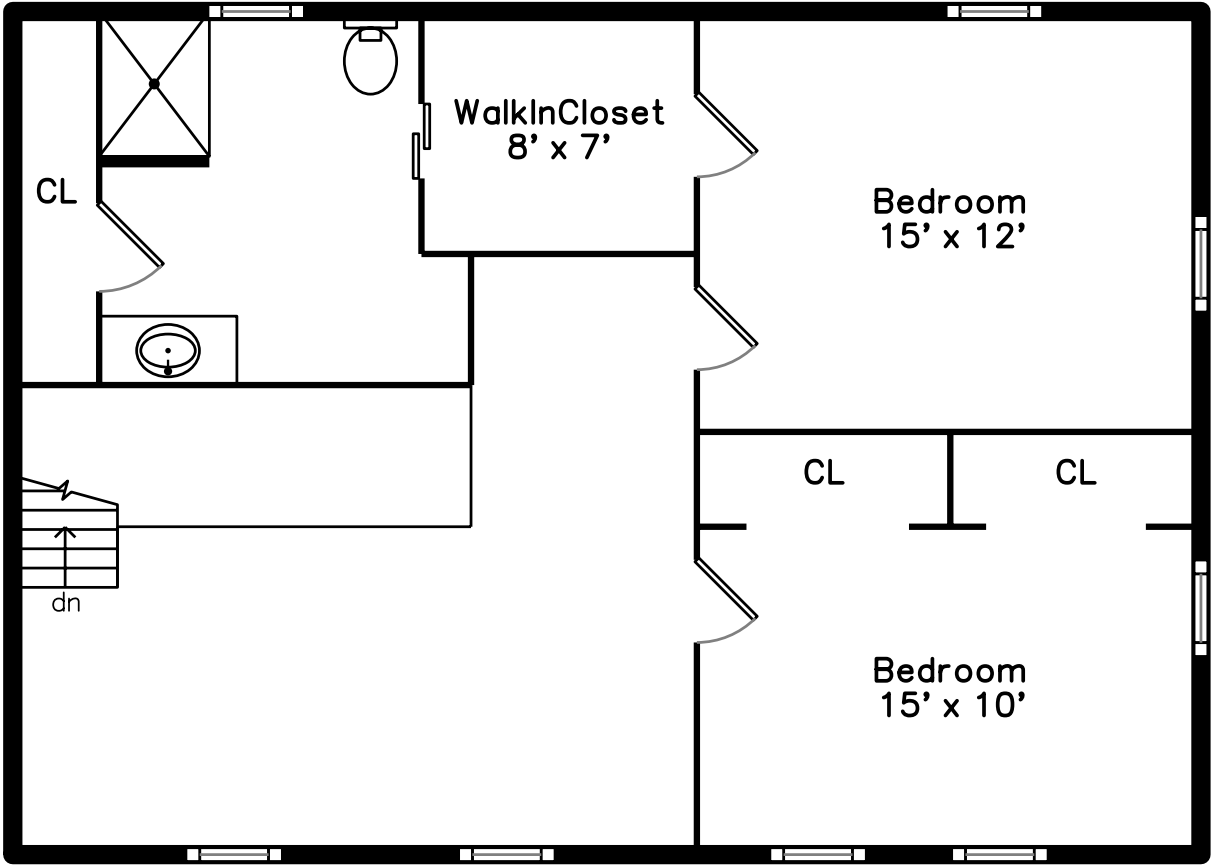
Unit #1 – Upper



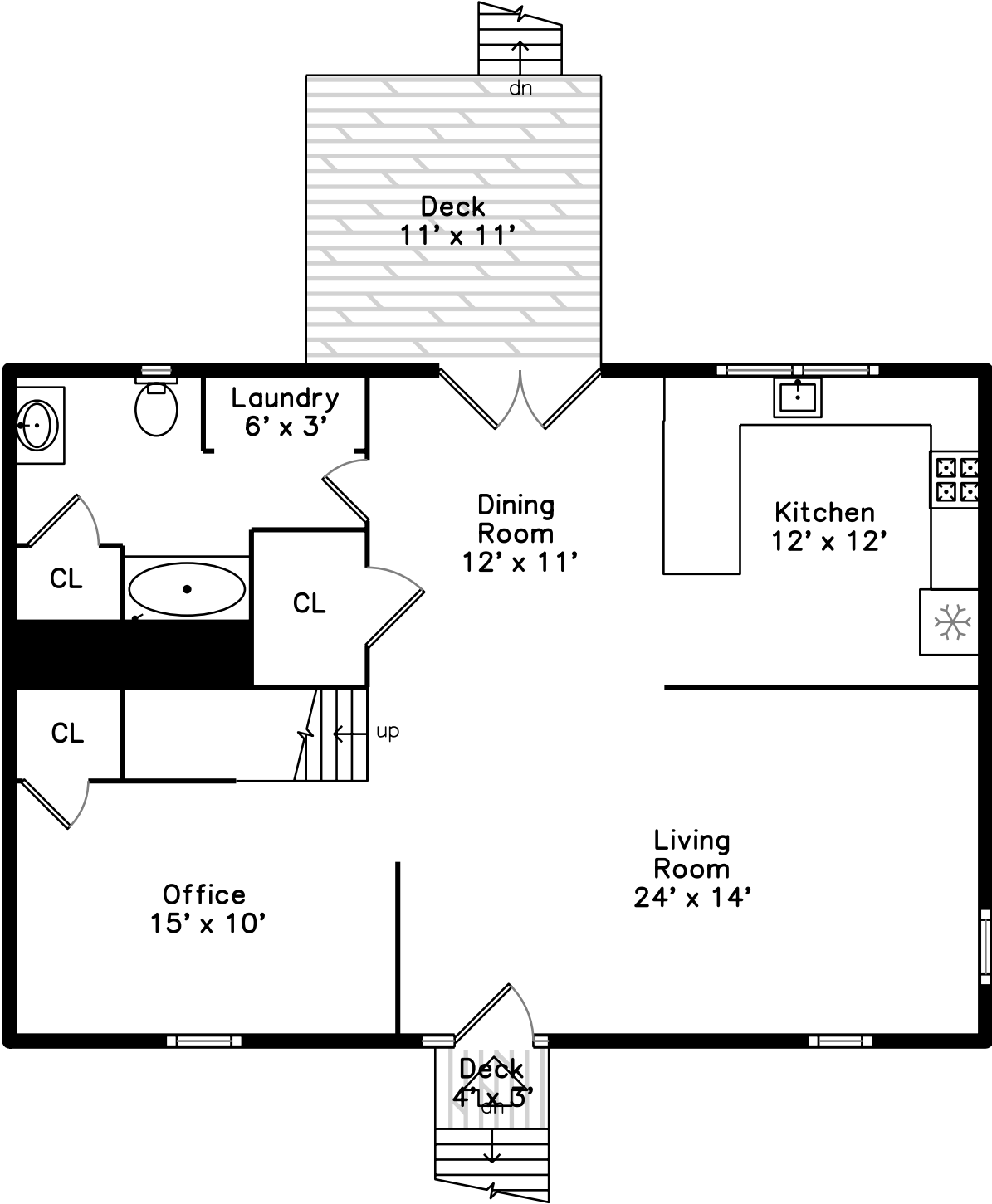
Unit #1 – Main



Unit #2 – Upper



Unit #2 – Main





Outside



Outside



Outside



Outside



Outside



Outside



Living Room



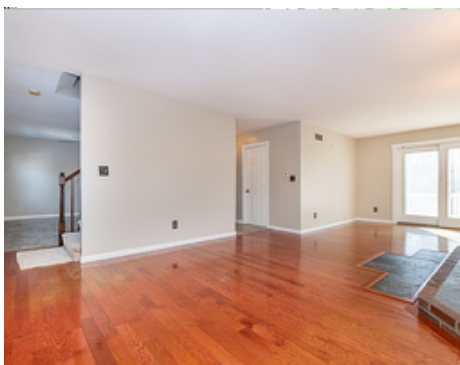
Living Room



Living Room



Living Room



Living Room



Dining Room



Dining Room



Dining Room



Dining Room



Kitchen



Kitchen



Kitchen



Bathroom



Laundry



Deck



Deck



Deck



Bedroom



Bedroom



Bedroom



Bedroom



Bedroom



Bedroom



Bedroom



Bedroom



Bedroom



Bedroom



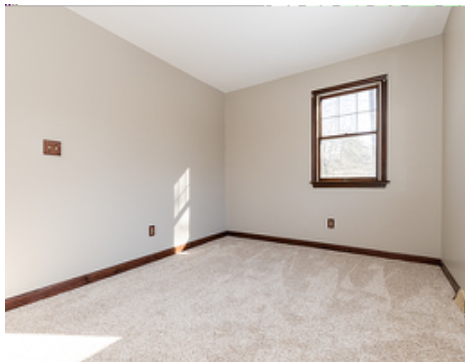
Bedroom



Office



Office



Office



Bathroom



Bathroom



Living Room



Living Room



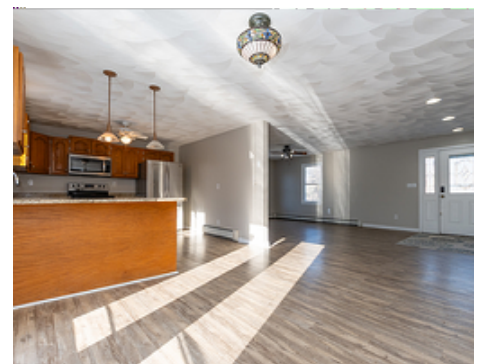
Living Room



Living Room



Dining Room



Dining Room



Dining Room



Kitchen



Kitchen



Kitchen



Kitchen



Kitchen



Office



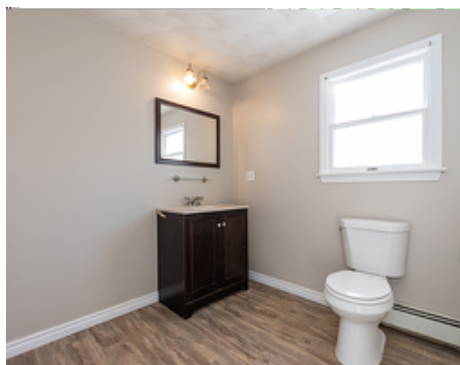
Office



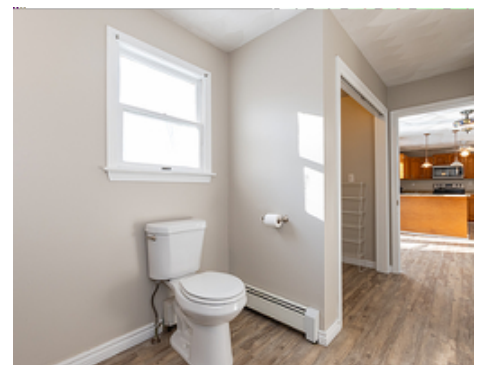
Office



Office



Bathroom



Bathroom



Bathroom



Deck



Deck



Hall



Hall



Hall



Bedroom



Bedroom



Bedroom



Bedroom



Bedroom



Bedroom



WalkInCloset



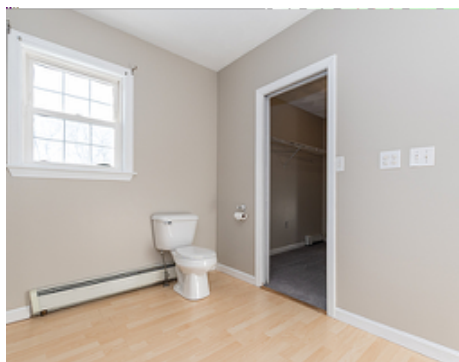
WalkInCloset



Bathroom



Bathroom



Bathroom



Living Dining Room



Living Dining Room



Living Dining Room



Living Dining Room



Kitchen



Kitchen



Kitchen



Kitchen



Bedroom



Bedroom



Bedroom



Bedroom



Bathroom



Bathroom