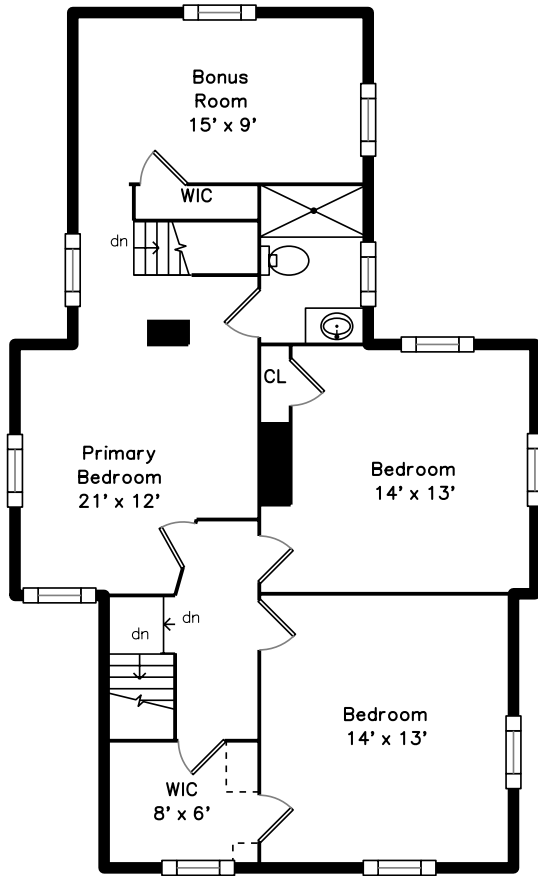
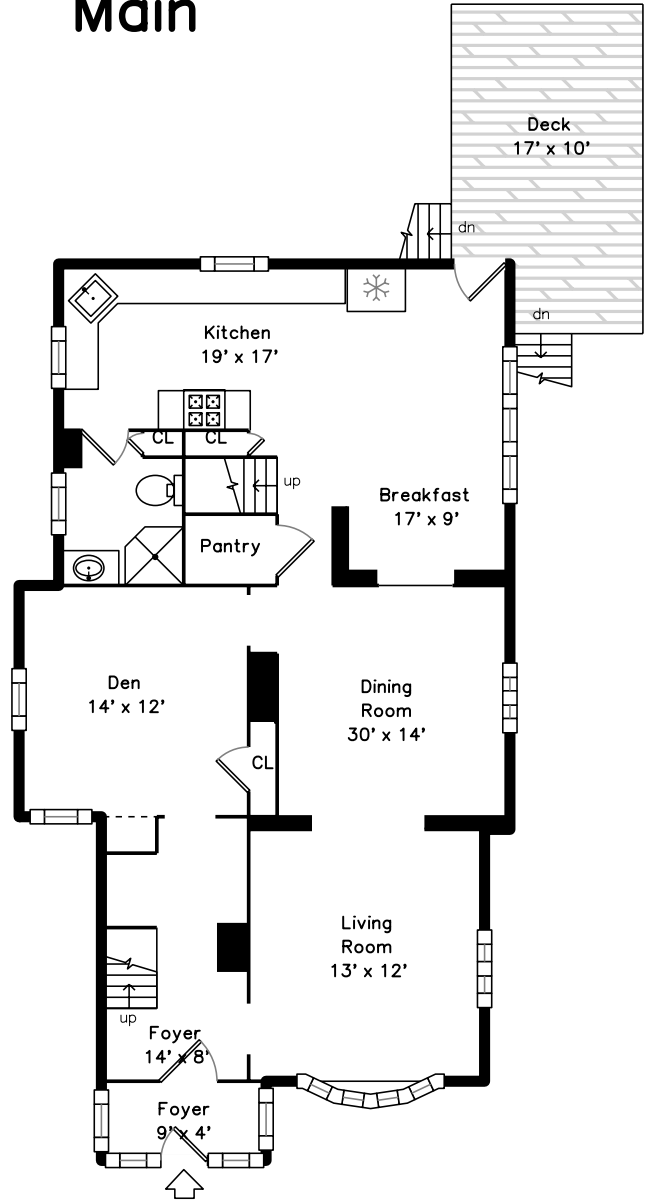


Upper



Main

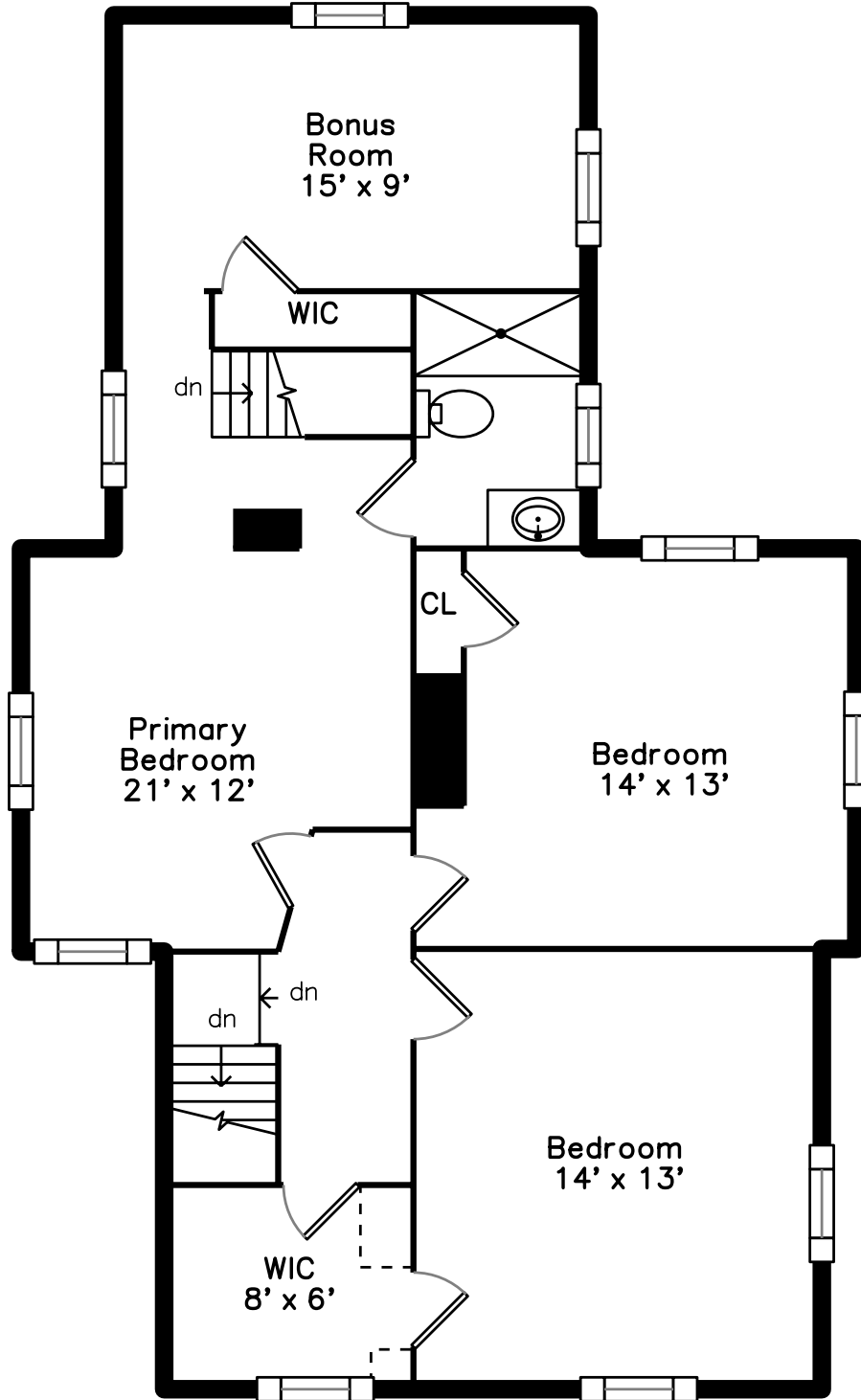


31 Loring Street
Somerville, MA 02143

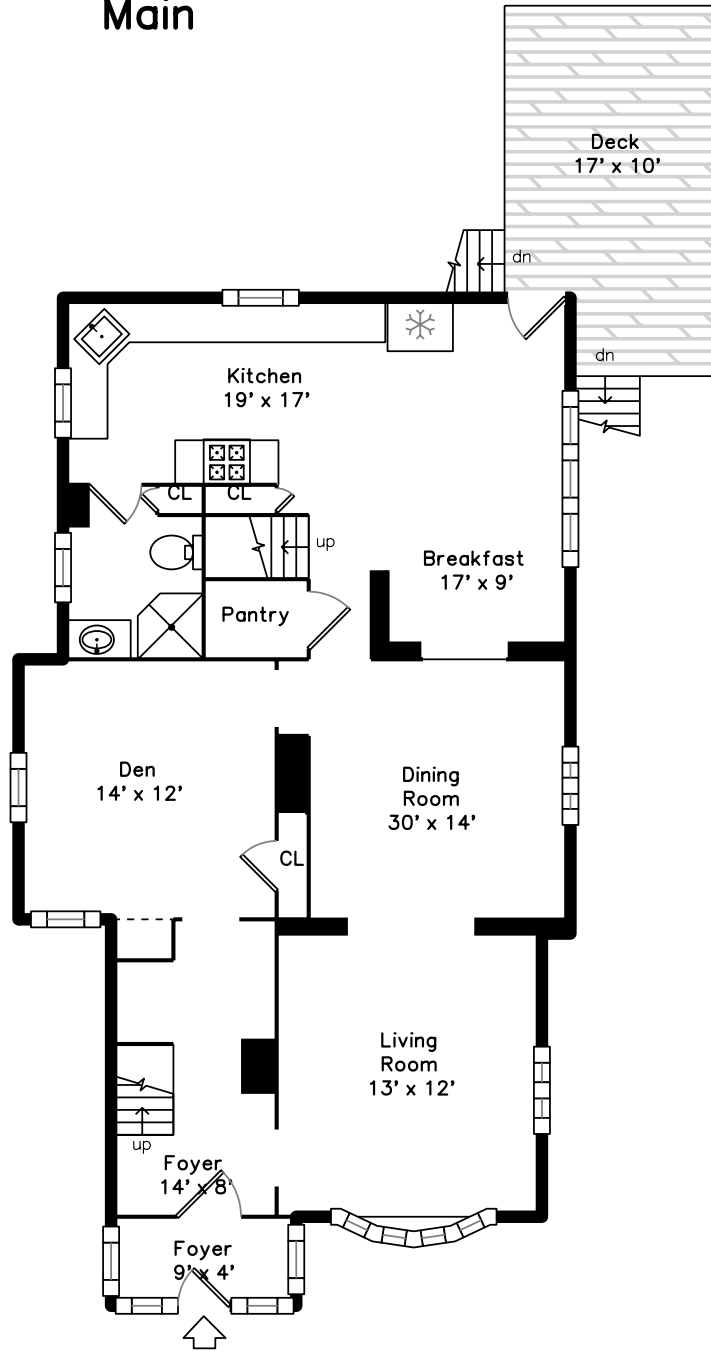
PicturePlan by  vis-home

Measurements may not be 100% accurate.
Floor plans are provided for convenience only.
Room sizes are not used to calculate area.

Upper



Main





Outside



Outside



Outside



Outside



Outside



Outside



Back



Aerial



Aerial



Aerial



Aerial



Aerial



Aerial



Aerial



Aerial



Aerial



Aerial



Aerial



Aerial



Aerial



Aerial



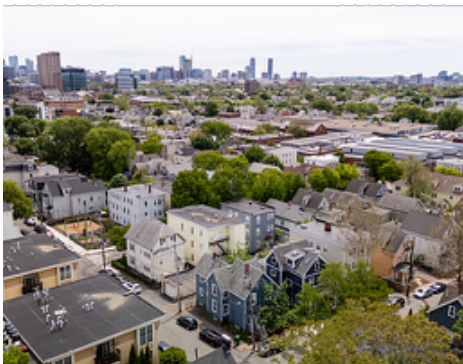
Aerial



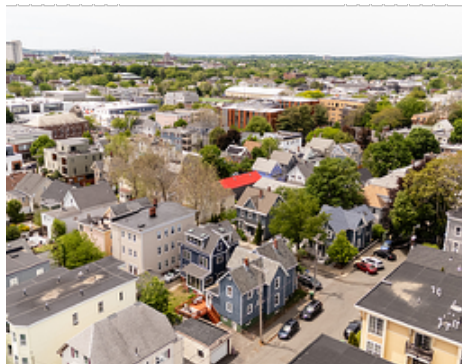
Aerial



Aerial



Aerial



Aerial



Aerial



Aerial



Foyer



Living Room



Living Room



Living Room



Living Room



Living Room



Living Room



Dining Room



Dining Room



Dining Room



Dining Room



Dining Room



Dining Room



Dining Room



Kitchen



Kitchen



Kitchen



Kitchen



Kitchen



Kitchen



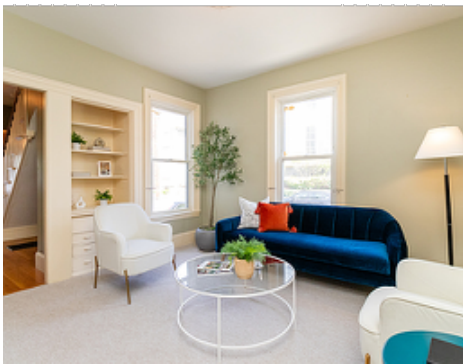
Kitchen



Breakfast



Breakfast



Den



Den



Den



Den



Den



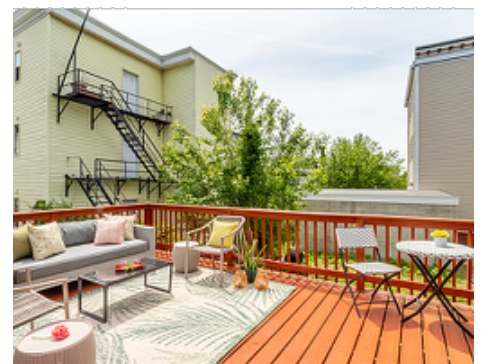
Den



Bathroom



Bathroom



Deck



Deck



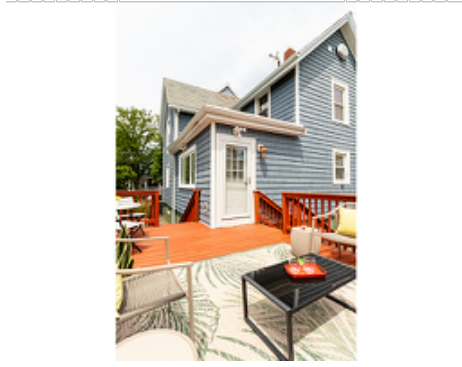
Deck



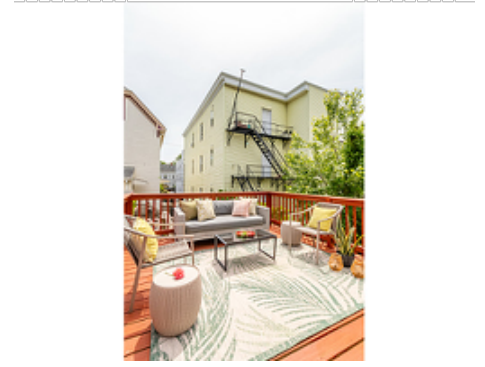
Deck



Deck



Deck



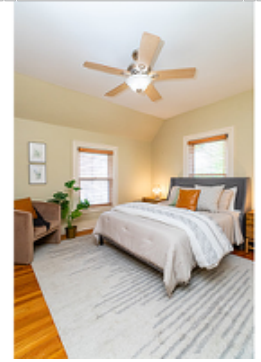
Deck



Deck



Bedroom



Bedroom



Bedroom



Bedroom



Bedroom



Bedroom



Primary Bedroom



Primary Bedroom



Primary Bedroom



Primary Bedroom



Primary Bedroom



Primary Bedroom



Bedroom



Bedroom



Bedroom



Bedroom



Bonus Room



Bonus Room



Bonus Room



Bonus Room



Primary Bathroom



Primary Bathroom



WalkInCloset



WIC



Bonus Room



Bonus Room



Utility Room



Utility Room



Utility Room